

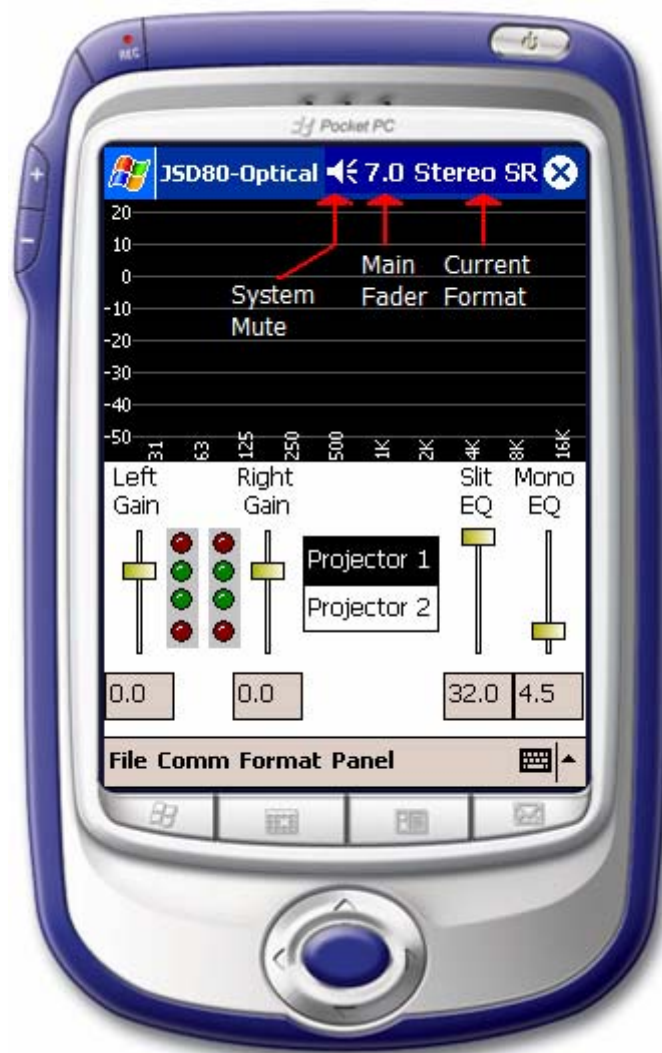
JSD-80 PDA Addendum

Rev 1.0

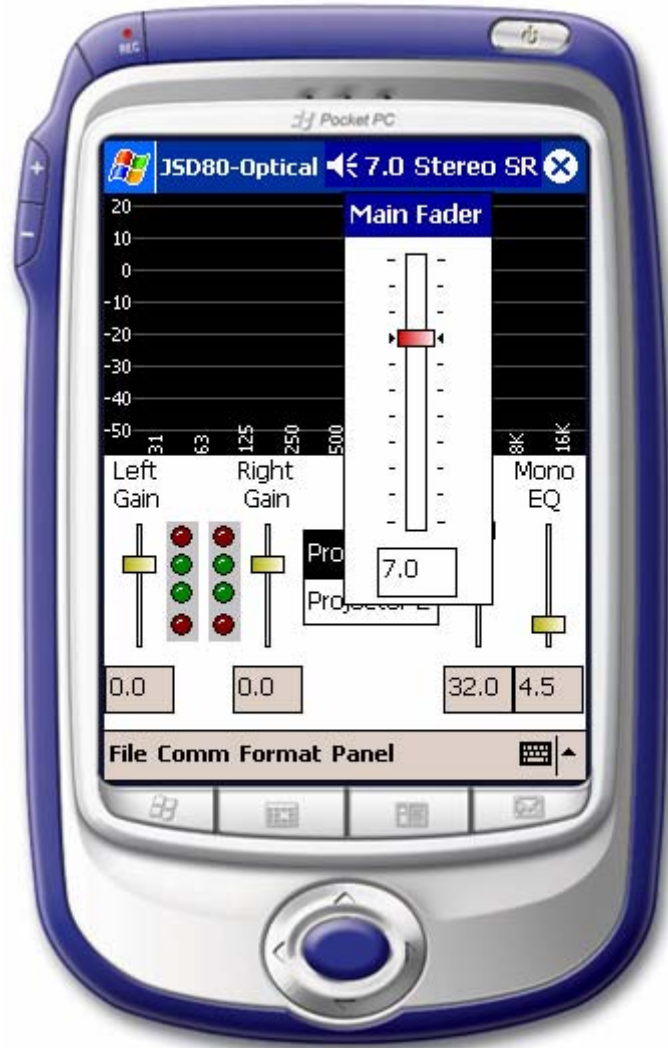
The JSD-80 PDA software was designed specifically for use with the HP iPAQ® rz1710 PDA. Although this software is capable of running on any PDA running MS Windows CE 3.0 or higher other PDA's may not support the required RS-232 hardware.

Due to space and functionality constraints of the PDA device certain functions have been changed from the laptop interface software. This addendum attempts to identify these differences in operation.

The following illustration displays the primary mute, level and format controls. Tap the "System Mute" icon to mute the output of the JSD-80. The "Current Format" indicator shows the currently selected format.



The following illustration shows the main fader adjustment when the main-fader control is tapped. Move the slider control up to increase main fader volume and down to decrease it.



The Inputs form has been broken down into two independent forms, one for adjusting optical preamps and the other for matrix adjustments. The following screen illustrates the Optical preamp adjustment form.



The left and right gain adjustment controls are used to adjust the preamp input levels for optical film modes. The led indicators are used in conjunction with A-chain alignment for setting the proper level with a 1k test tone input. The Projector 1 and Projector 2 buttons allow you to select which projector preamp you want to adjust. Slit EQ and Mono EQ adjustments can also be made to the preamp adjustment.

The following illustration displays the matrix adjustment form.



The gain control allows adjustment to the preamp input level for the selected Non-Sync, Auxiliary or Microphone formats. Select the input you want to adjust and slide the gain up or down. Note: For audible feedback adjustment you must have the active format selected. Surround delay and surround gain adjustments allow you to adjust delay and output gain for surround speakers in optical film modes. Sub gain and frequency controls allow you to adjust subwoofer gain and frequency for optical film modes.

Due to space limitations the EQ panel only allows the display of five adjustments at one time. To scroll the bands left or right you must click the right or left arrow buttons.

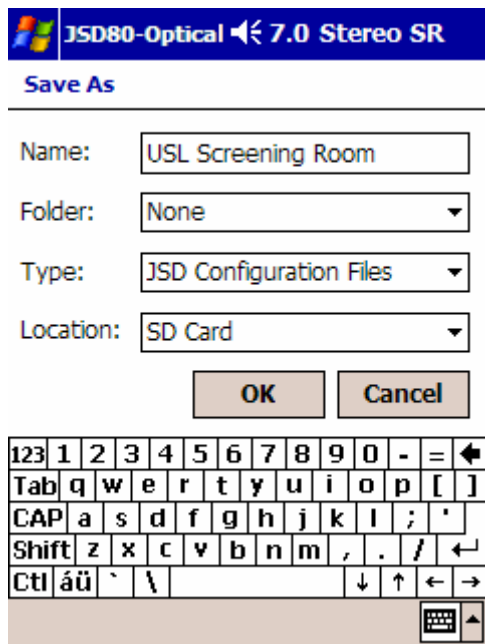


To make an equalizer adjustment select the appropriate channel and scroll left or right to the appropriate band and slide the level up or down.

To access the functions of the RTA tap the RTA screen.

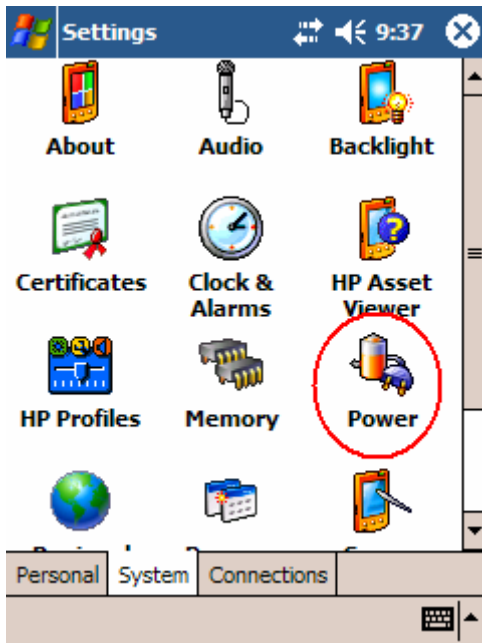


It is recommended that all configuration files are saved to the included SD Card. This will ensure that configuration data can not be lost in case of battery or PDA failure.

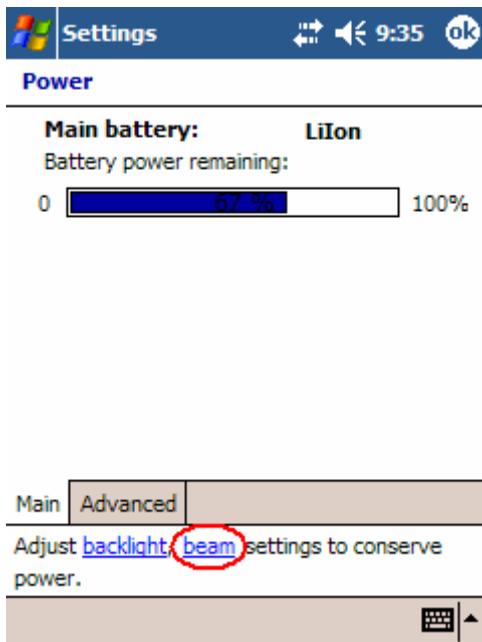


In order to preserve battery life of the PDA you must disable the "Incoming Beams" function of the PDA. If this feature is left on the PDA will wear down its batteries very quickly. This feature is cleared at the factory but if your PDA ever loses power and you reinstall the JSD-80 software you will need to disable this feature.

First enter the PDA settings from the Start menu. Next, select the "System" tab at the bottom. Tap the "Power" icon show in the following illustration:



Next tap the "beam" link at the bottom of the screen:



Make sure the "Receive all incoming beams" is not checked.

