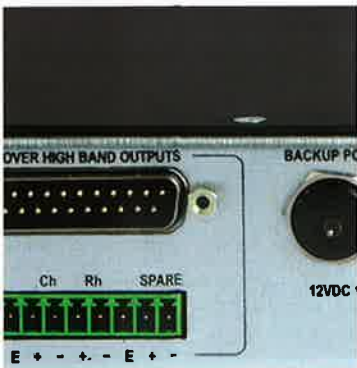
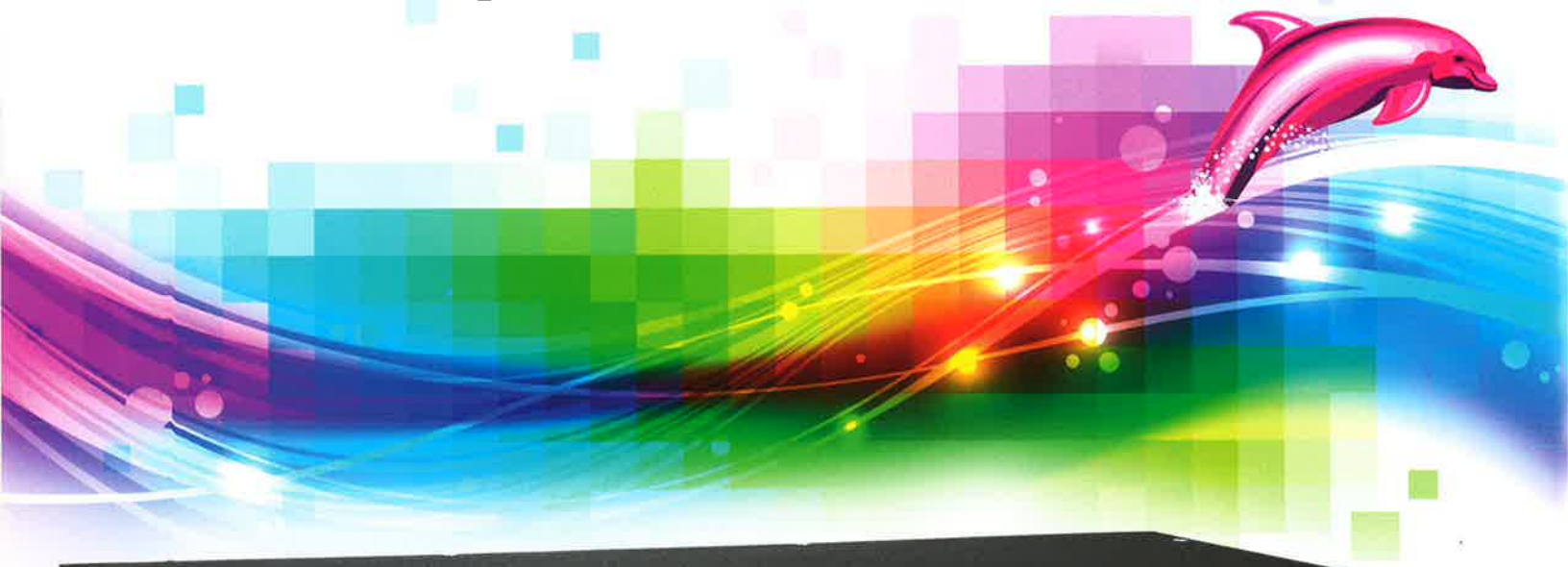


# XTM-300A

## Analog Bi-amp Crossover



XTM-300A is an analog bi-amp crossover for left, center and right channels. The unit can be configured for individual requirements by simply setting banks of DIP switches, and adjusting speaker levels using the potentiometers provided. Screen and horn equalization is also selectable with DIP switches to match the auditorium's needs. Bypass circuitry is provided and adjustable to match the normal volume level.



USL, Inc. proudly supports the protection of endangered species and animals under threat.

181 Bonetti Drive  
San Luis Obispo, CA 93401-7397 USA  
(Ph) +1 805.549.0161 (Fax) +1 805.549.0163  
uslinc@uslinc.com www.uslinc.com



# XTM-300A



## Analog bi-amp crossover

### ○ ○ ○ ○ ● SPECIFICATIONS

- Normal bi-amp output level adjustments
- Bypass level adjustment
- Normal/Bypass switch
- Normal/Bypass LED indicators
- Screen and horn equalization
- Eleven selectable frequencies
- Four selectable time delays

