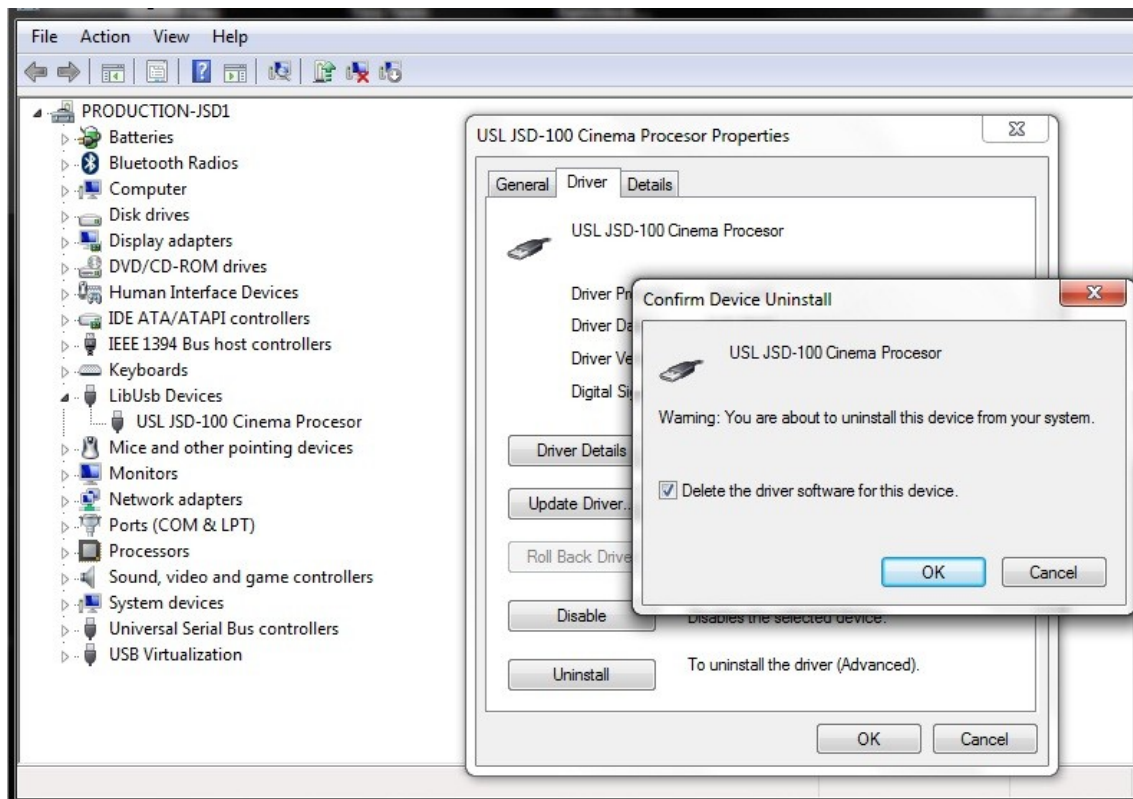

JSD-100 USB Driver Installation

Section one contains the instructions to remove the current driver installed. Be advised that in the first release of the driver package, it is not a signed driver and will not work on Windows 7. The new WinUSB driver is a native USB interface that is being used in this GUI application release.

Section two is the installation procedure for setting up the WinUSB version.

1.0 USB Driver Removal

To remove the current JSD-100 USB driver installation the JSD-100 must be connected to the computer and by using Device Manager, the driver will be uninstalled.



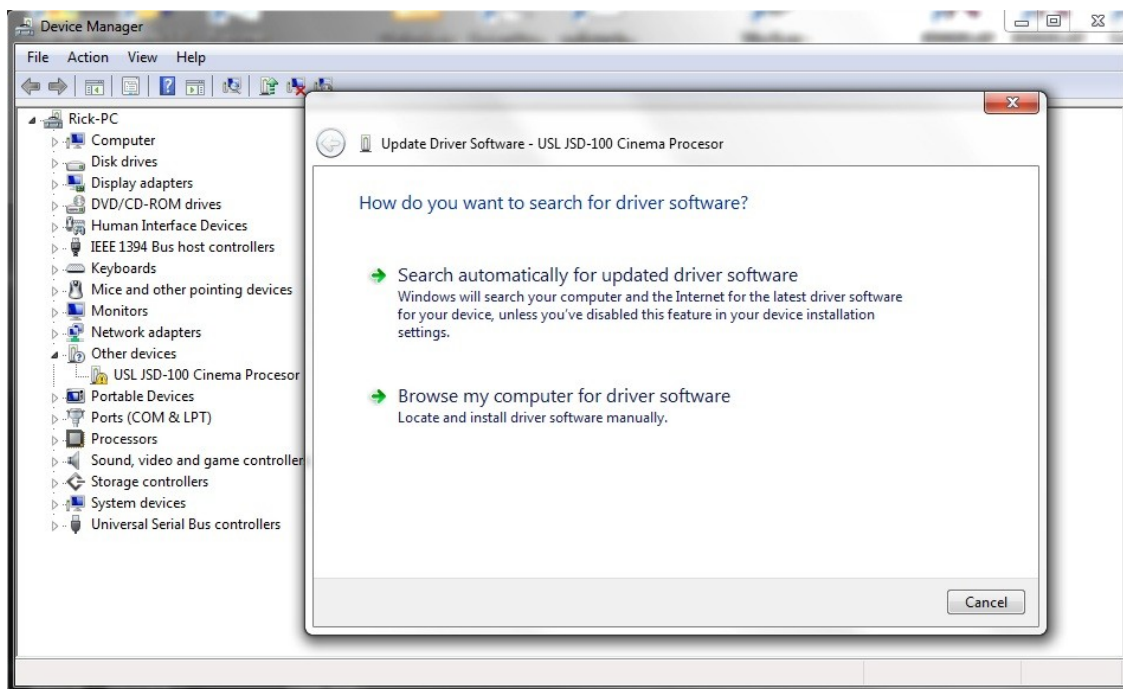
1. Power on the JSD-100 and when it has completed startup connect the USB cable to the computer.
2. Run device manager and locate the "LibUsb Devices" entry and select the USL JSD-100 Cinema Processor.
3. Right click the mouse to open the properties dialog and then activate the "Uninstall" button.

4. On Windows 7, check the delete option, then proceed by activating the “OK” button.
5. Unplug the USB cable and proceed to 2.0 for new driver installation.

2.0 USB Driver Installation

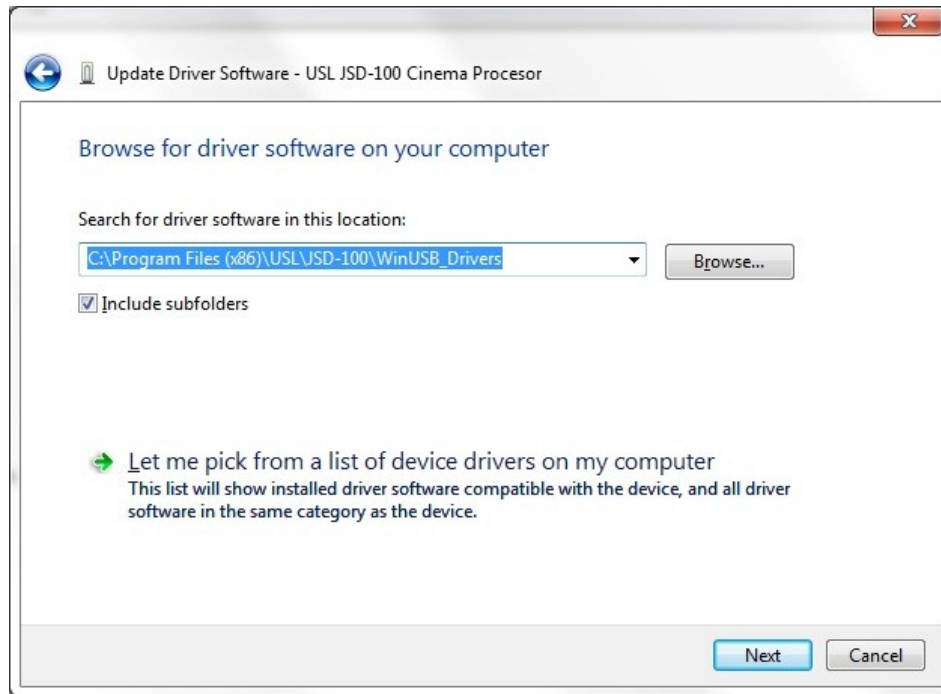
The JSD-100 Installation (Setup) program creates a subfolder called “WinUSB_Drivers” that will be used for loading the new WinUSB driver. For updating the WinUSB driver on a PC running Windows XP see section 3.0.

1. Start device manager and then connect the USB cable to a powered on JSD-100.
2. Select the USL JSD-100 Cinema Processor from the device list and right click and select “Properties.”

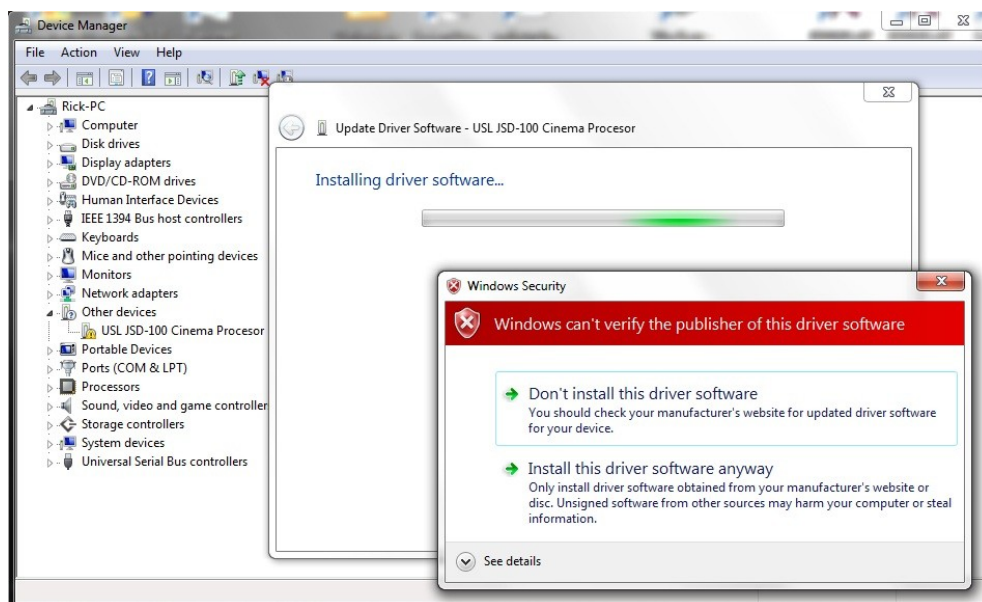


3. Use the “Browse my Computer for the driver software” option to load the WinUSB driver. Note that the search automatically option will reload the old version and will need to repeat the driver removal process.
4. Browse to “C:\Program Files\USL\JSD-100\WinUSB_Drivers” and then proceed to load the selected driver by activation of the Next button.

JSD-100 USB Driver Installation



5. Proceed to load the selected driver by selecting the “Install this driver software anyway.”
6. When the installation completes, the device manager will now display the USL JSD-100 Cinema Processor under the libusb (WinUSB) devices. From the GUI the JSD USB device will appear in the Communications Settings dialog.



JSD-100 USB Driver Installation

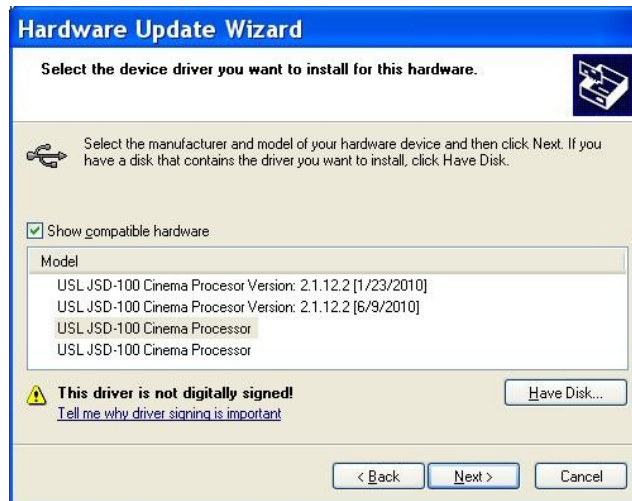
3.0 Driver Installation Windows XP

With the unit power on and the display showing a main fader level, connect the USB to the JSD-100 and wait for the found new hardware process to run. The driver is stored in the “C:\Program Files\USL\JSD-100\WinUSB_Drivers” folder. When updating the current driver the following steps are required, otherwise the installation process is as described in 2.0.

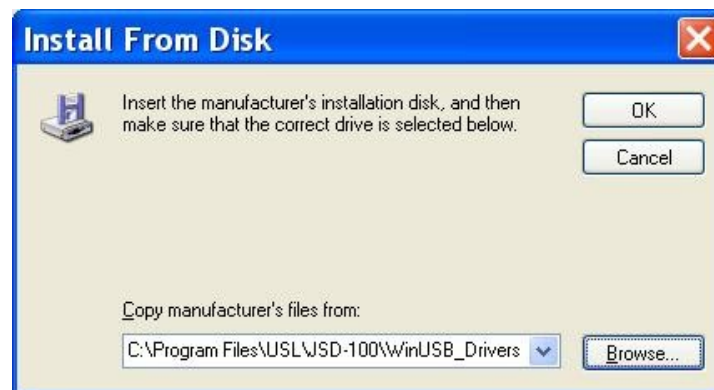
1. Start Device management to view the installed devices and select the JSD-100 Cinema Processor from the device list. The access the device properties and select “Update Driver” option. Then select the “Install from list or specified location” option from the menu and in the following dialog select the “Don’t search” option as shown below.



2. In this case another version of the JSD-100 Cinema Processor is installed and requires updating with a new version. Activate the “Have Disk” button.



3. Use the Install from disk dialog to select the folder containing the driver to install/update via the “Browse” button.



4. The selected driver will then be displayed as show and then active the “Next” button to start the installation process.

JSD-100 USB Driver Installation



5. The status of the driver installation will be displayed.

