

Rules and Regulations

Federal Register

Vol. 63, No. 138

Monday, July 20, 1998

This section of the FEDERAL REGISTER contains regulatory documents having general applicability and legal effect, most of which are keyed to and codified in the Code of Federal Regulations, which is published under 50 titles pursuant to 44 U.S.C. 1510.

The Code of Federal Regulations is sold by the Superintendent of Documents. Prices of new books are listed in the first FEDERAL REGISTER issue of each week.

DEPARTMENT OF ENERGY

Office of Energy Efficiency and Renewable Energy

10 CFR Part 430

[Docket No. EE-RM-94-230]

RIN 1904-AA52

Energy Conservation Program for Consumer Products: Test Procedure for Water Heaters; Correction

AGENCY: Office of Energy Efficiency and Renewable Energy, DOE.

ACTION: Final rule; correction.

SUMMARY: This correction notice amends the Final Rule on test procedures for water heaters. The Department of Energy (the Department or DOE) is amending Section 4.3 (Water Inlet and Outlet Configuration) to include Figures 1-7 as referenced in the Final Rule published May 11, 1998. (63 FR 25996) (FR Doc. 98-12296). Soon after publication of the Final Rule, the Gas Appliance Manufacturer's Association noted that these figures were missing.

EFFECTIVE DATE: This rule is effective June 10, 1998.

FOR FURTHER INFORMATION CONTACT: Mr. Terrence L. Logee, U.S. Department of Energy, Office of Energy Efficiency and Renewable Energy, Mail Station EE-43, Forrestal Building, 1000 Independence Avenue, SW, Washington, DC 20585-0121, (202) 586-1689, or Eugene Margolis, Esq., U.S. Department of Energy, Office of General Counsel, Mail Station GC-72, Forrestal Building, 1000

Independence Avenue, SW, Washington, DC 20585-0103, (202) 586-9507.

Correction

In Rule FR Doc. 98-12296, beginning on page 25996, in the issue of Monday, May 11, 1998, the following correction should be made:

PART 430--[CORRECTED]

Figures 1-7 should be added immediately after Appendix E to Subpart B of Part 430, Section 4.3, Water Inlet and Outlet Configuration, on page 26010, third column.

Appendix E to Subpart B of Part 430—Uniform Test Method for Measuring the Energy Consumption of Water Heaters

\* \* \* \* \*

4.3 \* \* \*

BILLING CODE 6450-01-P

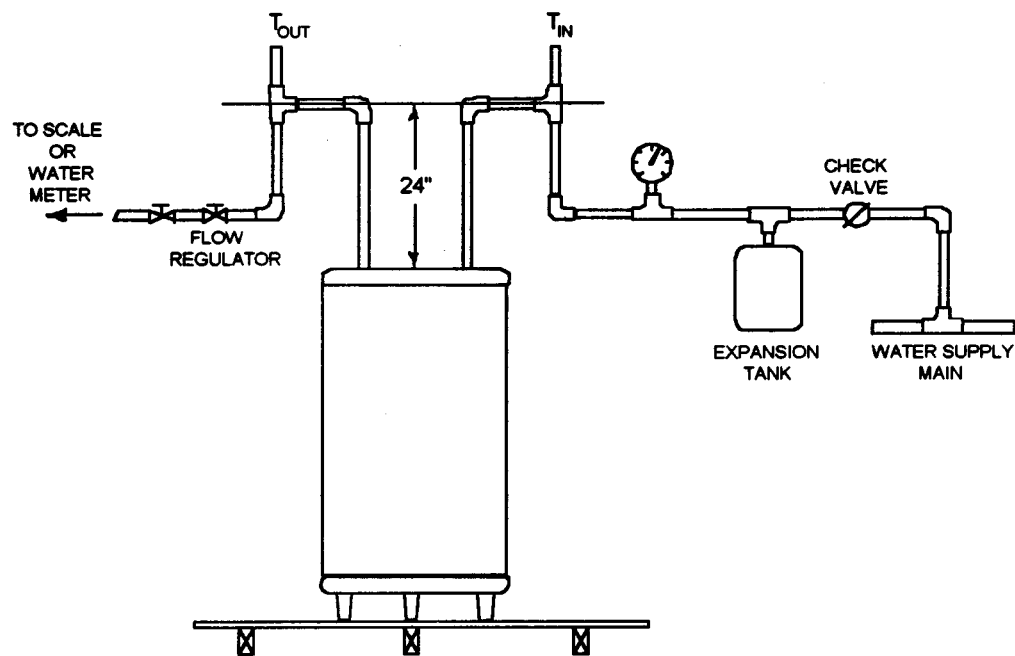


Figure 1.

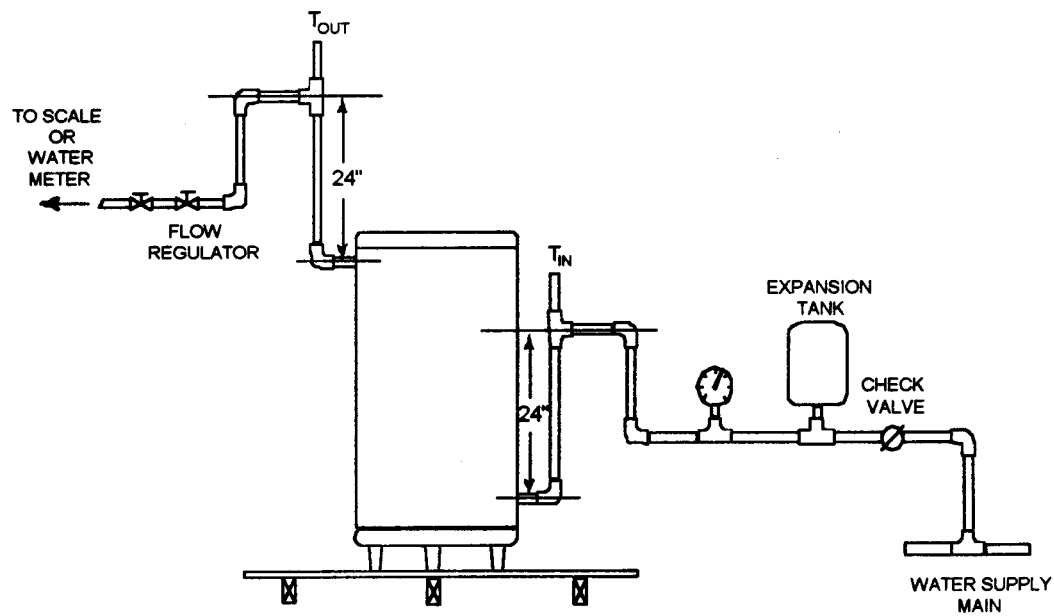


Figure 2.

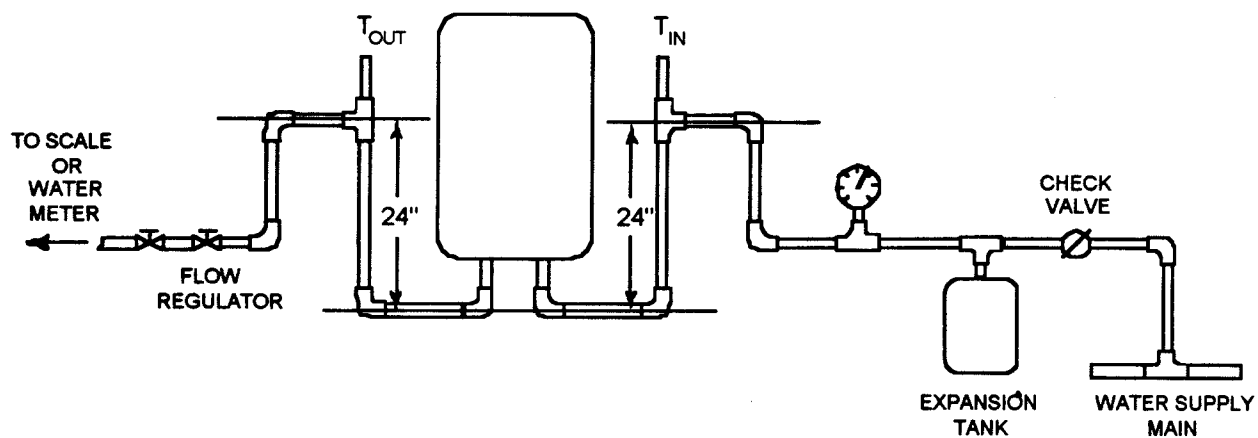


Figure 3.

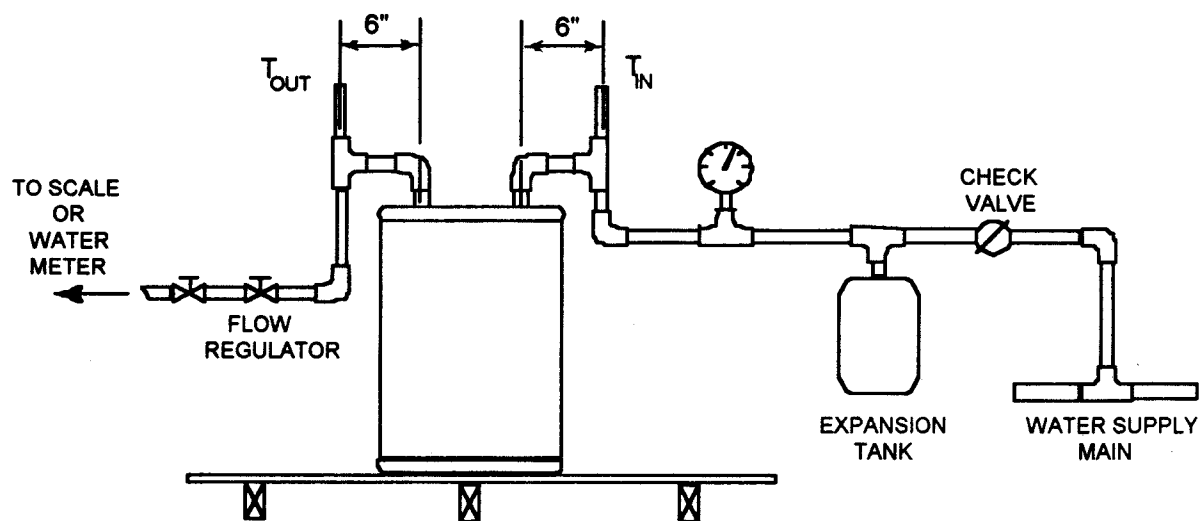


Figure 4.

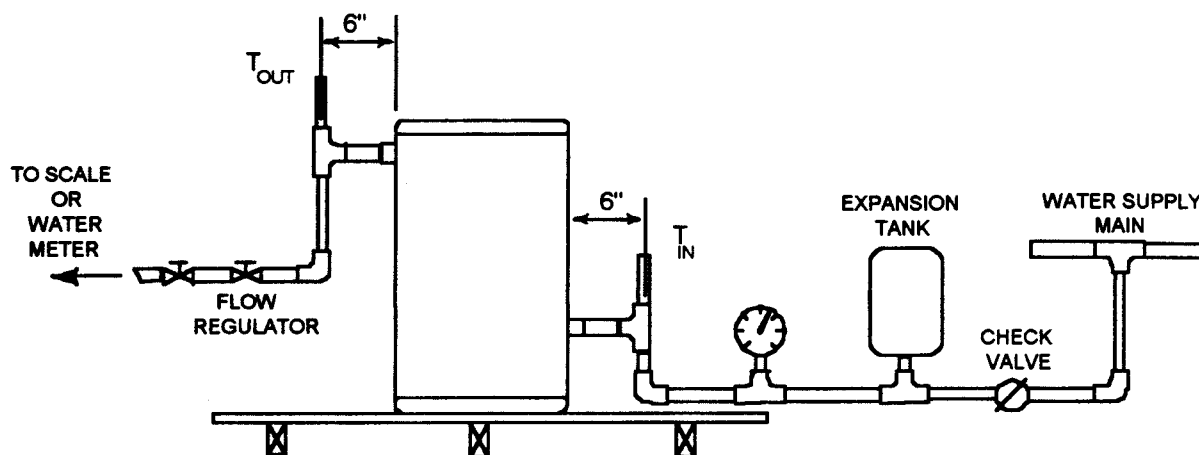


Figure 5.

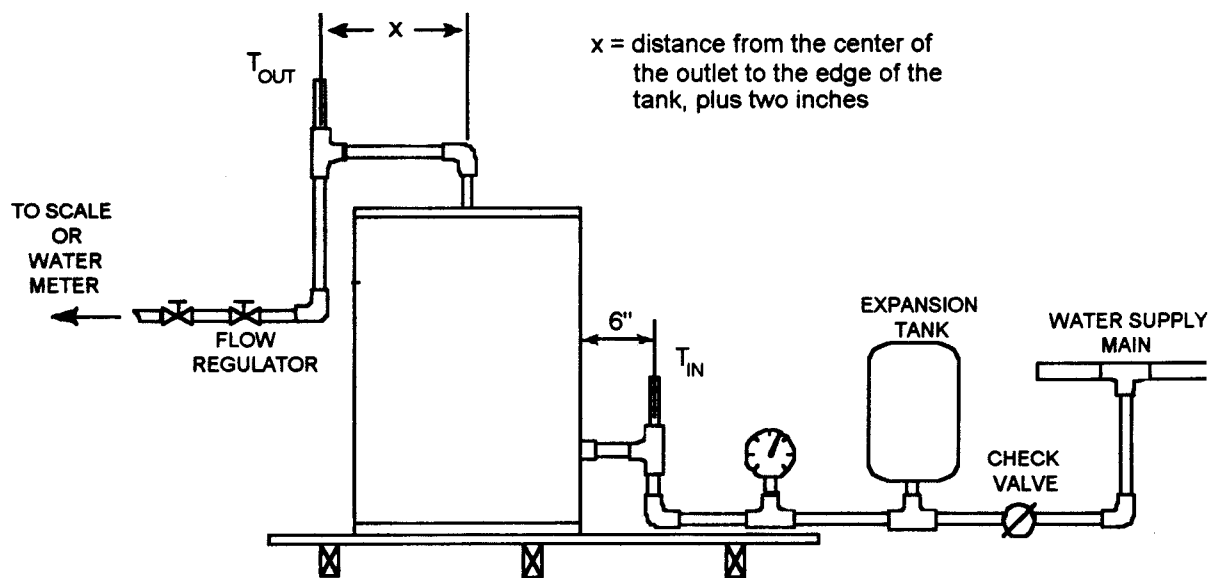
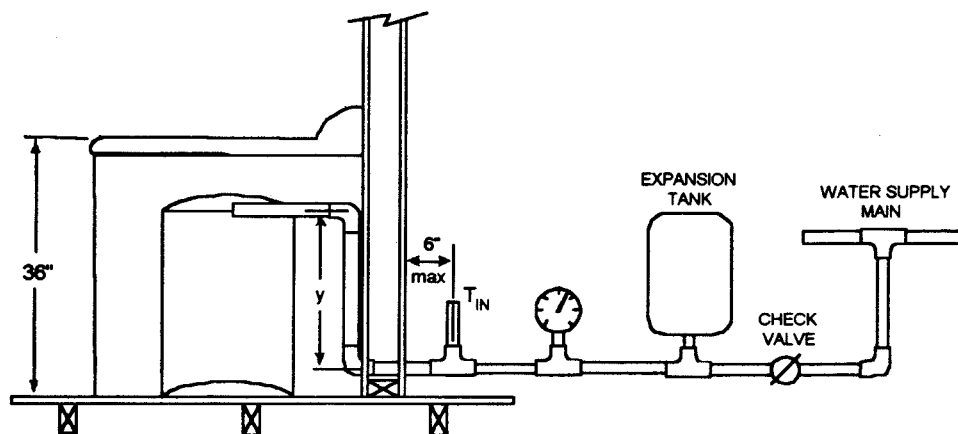
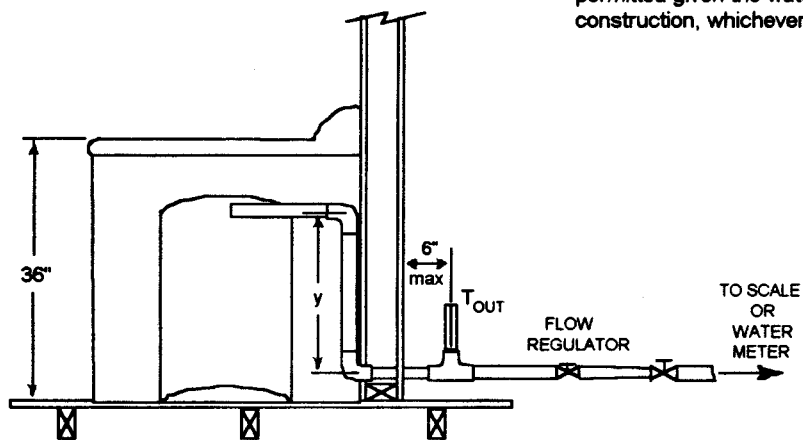


Figure 6.



(a)

$y = 24$  inches or the maximum distance permitted given the water heaters construction, whichever is less



(b)

Figure 7.

Issued in Washington, DC, July 13, 1998.

**Dan Reicher,**

*Assistant Secretary, Energy Efficiency and Renewable Energy.*

[FR Doc. 98-19290 Filed 7-17-98; 8:45 am]

BILLING CODE 6450-01-C

\* \* \* \* \*