

recording, and Braille), send an e-mail to fcc504@fcc.gov or call the Commission's Consumer and Governmental Affairs Bureau at (202) 418-0530 (voice), (202) 418-0432 (TTY). This document does not contain proposed information collection requirements subject to the Paperwork Reduction Act of 1995, Public Law 104-13. In addition, therefore, it does not contain any proposed information collection burden "for small business concerns with fewer than 25 employees," pursuant to the Small Business Paperwork Relief Act of 2002, Public Law 107-198, *see* 44 U.S.C. 3506(c)(4).

Provisions of the Regulatory Flexibility Act of 1980 do not apply to this proceeding. Members of the public should note that from the time a Notice of Proposed Rule Making is issued until the matter is no longer subject to Commission consideration or court review, all *ex parte* contacts are prohibited in Commission proceedings, such as this one, which involve channel allotments. *See* 47 CFR 1.1204(b) for rules governing permissible *ex parte* contacts.

For information regarding proper filing procedures for comments, *see* 47 CFR 1.415 and 1.420.

List of Subjects in 47 CFR Part 73

Television, Television broadcasting.

For the reasons discussed in the preamble, the Federal Communications Commission proposes to amend 47 CFR Part 73 as follows:

PART 73—RADIO BROADCAST SERVICES

1. The authority citation for part 73 continues to read as follows:

Authority: 47 U.S.C. 154, 303, 334, 336.

§ 73.622(i) [Amended]

2. Section 73.622(i), the Post-Transition Table of DTV Allotments under Kentucky, is amended by adding channel 36 and removing channel 13 at Lexington.

Clay C. Pendarvis,

Associate Chief, Video Division, Media Bureau, Federal Communications Commission.

[FR Doc. E9-22833 Filed 9-21-09; 8:45 am]

BILLING CODE 6712-01-P

DEPARTMENT OF TRANSPORTATION

National Highway Traffic Safety Administration

49 CFR Parts 531 and 533

[Docket No. NHTSA-2009-0059]

Passenger Car Average Fuel Economy Standards—Model Years 2008–2020; Light Truck Average Fuel Economy Standards—Model Years 2008–2020; Request for Product Plan Information

AGENCY: National Highway Traffic Safety Administration (NHTSA), Department of Transportation (DOT).

ACTION: Request for information.

SUMMARY: The purpose of this request for comments is to acquire updated information regarding vehicle manufacturers' future product plans to assist the agency in assessing what corporate average fuel economy (CAFE) standards should be established for model years 2012 through 2016 passenger cars and light trucks. The establishment of those standards is required by the Energy Policy and Conservation Act, as amended by the Energy Independence and Security Act (EISA) of 2007, Public Law 110-140. This request for comments is being issued concurrently with a joint Notice of Proposed Rulemaking by NHTSA and EPA to proposed CAFE and greenhouse gas (GHG) standards for MYs 2012–2016 passenger cars and light trucks.

DATES: Comments must be received on or before November 23, 2009.

ADDRESSES: You may submit comments [identified by Docket No. NHTSA-2009-0059] by any of the following methods:

- **Federal eRulemaking Portal:** Go to <http://www.regulations.gov>. Follow the online instructions for submitting comments.

- **Mail:** Docket Management Facility, U.S. Department of Transportation, 1200 New Jersey Avenue, SE., West Building Ground Floor, Room W12-140, Washington, DC 20590.

- **Hand Delivery or Courier:** West Building Ground Floor, Room W12-140, 1200 New Jersey Avenue, SE., between 9 a.m. and 5 p.m. ET, Monday through Friday, except Federal holidays. Telephone: 1-800-647-5527.

- **Fax:** 202-493-2251.

Instructions: All submissions must include the agency name and docket number for this proposed collection of information. Note that all comments received will be posted without change to <http://www.regulations.gov>, including any personal information provided.

Please see the Privacy Act heading below.

Privacy Act: Anyone is able to search the electronic form of all comments received into any of our dockets by the name of the individual submitting the comment (or signing the comment, if submitted on behalf of an association, business, labor union, *etc.*). You may review DOT's complete Privacy Act Statement in the **Federal Register** published on April 11, 2000 (65 FR 19477-78) or you may visit <http://www.dot.gov/privacy.html>.

Docket: For access to the docket to read background documents or comments received, go to <http://www.regulations.gov> and follow the online instructions, or visit the Docket Management Facility at the street address listed above.

FOR FURTHER INFORMATION CONTACT: Mr. Ken Katz, Fuel Economy Division, Office of International Policy, Fuel Economy and Consumer Programs, at (202) 366-0846, facsimile (202) 493-2290, electronic mail ken.katz@dot.gov. For legal issues, call Ms. Rebecca Yoon, Office of the Chief Counsel, at (202) 366-2992.

SUPPLEMENTARY INFORMATION:

I. Introduction

NHTSA has been issuing Corporate Average Fuel Economy (CAFE) standards for the last 30 years under the Energy Policy and Conservation Act (EPCA). The CAFE program conserves petroleum, a non-renewable energy source, saves consumers money, and promotes energy independence and security by reducing dependence on foreign oil. It also reduces carbon dioxide (CO₂) emissions from the tailpipes of new motor vehicles and the effects of climate change.

The Energy Independence and Security Act (EISA) amended EPCA by mandating that model year (MY) 2011–2020 standards be set to ensure that the industry wide average of all new passenger cars and light trucks, combined, is at least 35 miles per gallon (mpg) by MY 2020. This is a minimum requirement, as NHTSA must set standards at the maximum feasible level in each model year. EISA also mandated that the CAFE standards be based on one or more vehicle attributes. For example, size-based (*i.e.*, size-indexed) standards assign higher fuel economy targets to smaller vehicles and lower ones to larger vehicles. The fleetwide average fuel economy that a particular manufacturer must achieve depends on the size mix of its fleet. This approach ensures that all manufacturers will be required to incorporate fuel-saving

technologies across a broad range of their passenger car and light truck fleets.

Concurrently with this request for information, the agency is issuing a joint Notice of Proposed Rulemaking with EPA to propose CAFE and GHG standards for MYs 2012–2016 passenger cars and light trucks. The joint proposed rulemaking is consistent with the National Fuel Efficiency Policy announced by President Obama on May 19, 2009, responding to the country's critical need to address global climate change and to reduce oil consumption. The standards proposed by the agencies require passenger cars and light trucks to meet an estimated combined average emissions level of 250 grams of CO₂ per mile in MY 2016 under EPA's GHG program, and 34.1 mpg in MY 2016 under NHTSA's CAFE program and represent a harmonized and consistent national program (National Program). Under the National Program, automobile manufacturers would be able to build a single light-duty national fleet that satisfies all requirements under both programs while ensuring that consumers still have a full range of vehicle choices.

To assist the agency in analyzing potential CAFE standards for MYs 2012 through 2016, NHTSA is requesting any updates to future product plans previously provided by vehicle manufacturers, as well as production data through the recent past, including data about engines and transmissions for MY 2008 through MY 2020 passenger cars and light trucks and the assumptions underlying those plans. If manufacturers have not previously submitted product plan information to NHTSA and wish to do so, NHTSA also requests such information from them. NHTSA requests information for MYs 2008–2020 to supplement other information used by NHTSA in developing a realistic forecast of the MY 2012–2016 vehicle market, and in evaluating what technologies may feasibly be applied by manufacturers to achieve compliance with the MY 2012–2016 standards. Information regarding earlier model years may help the agency to better account for cumulative effects such as volume- and time-based reductions in costs, and also may help to reveal product mix and technology application trends during model years for which the agency is currently receiving actual CAFE compliance data. Information regarding later model years may help the agency gain a better understanding of how manufacturers' plans through MY 2016 relate to their longer-term expectations regarding EISA requirements, market trends, and prospects for more advanced

technologies (such as HCCI engines, and plug-in hybrid, electric, and fuel cell vehicles, among others). NHTSA will also consider information from model years before and after MYs 2012–2016 when reviewing manufacturers' planned schedules for redesigning and freshening their products, in order to examine how manufacturers anticipate trying technology introduction to product design schedules. In addition, the agency is requesting information regarding manufacturers' estimates of the future vehicle population, and fuel economy improvements and incremental costs attributed to technologies reflected in those plans. The request for information is detailed in appendices to this notice. NHTSA has also included a number of questions directed primarily toward vehicle manufacturers. They can be found in Appendix A to this notice. Answers to those questions will assist the agency in its analysis.

Given the importance that responses to this request for comment may have in NHTSA's final CAFE rulemaking, either as part of the basis for the standards or as an independent check on them, NHTSA intends to review carefully and critically all data provided by commenters. It is crucial that commenters fully respond to each question, particularly by providing information regarding the basis for technology costs and effectiveness estimates.

To facilitate the submission of comments and to help ensure the conformity of data received regarding manufacturers' product plans from MY 2008 through MY 2020, NHTSA has developed spreadsheet templates for manufacturers' use. The uniformity provided by these spreadsheets is intended to aid and expedite our review, integration, and analysis of the information provided. These templates are the agency's strongly preferred format for data submittal, and can be found on the Volpe National Transportation Systems Center (Volpe Center) Web site at <ftp://ftpserver.volpe.dot.gov/pub/CAFE/templates/> or can be requested from Mr. Ken Katz at ken.katz@dot.gov. The templates include an automated tool (*i.e.*, a macro) that performs some auditing to identify missing or potentially erroneous entries. The appendices to this document also include sample tables that manufacturers may refer to when submitting their data to the agency.

In addition, NHTSA would like to note that we will share the information submitted in response to this notice with the Environmental Protection

Agency (EPA). This sharing will facilitate our consideration of the appropriate factors to be used in establishing fuel economy standards for MY 2012 and beyond. We will ensure that confidential information that is shared is protected from disclosure in accordance with NHTSA's regulations and practices in this area.

II. Submission of Comments

How Do I Prepare and Submit Comments?

Comments should be prepared using the spreadsheet template described above. Please include the docket number of this document in your comments. Please submit two copies of your comments, including the attachments, to Docket Management at the address given above under **ADDRESSES**. Comments may also be submitted to the docket electronically by logging onto <http://www.regulations.gov>. Click on the "Help" tab at the top of the page and follow the instructions for finding a regulation and filing the comment electronically.

How Can I Be Sure That My Comments Were Received?

If you wish Docket Management to notify you upon its receipt of your comments, enclose a self-addressed, stamped postcard in the envelope containing your comments. Upon receiving your comments, Docket Management will return the postcard by mail.

How Do I Submit Confidential Business Information?

If you wish to submit any information under a claim of confidentiality, you should submit three copies of your complete submission, including the information you claim to be confidential business information, to the Chief Counsel, NHTSA, at the address given above under **FOR FURTHER INFORMATION CONTACT**. In addition, you should submit a copy from which you have deleted the claimed confidential business information to the docket. When you send a comment containing information claimed to be confidential business information, you should include a cover letter setting forth the information specified in our confidential business information regulation. (49 CFR part 512)

Will the Agency Consider Late Comments?

We will consider all comments that Docket Management receives before the close of business on the comment closing date indicated above under

DATES. Due to the time frame of the upcoming rulemaking, we will be very limited in our ability to consider comments filed after the comment closing date. If a comment is received too late for us to consider it in developing a final rule, we will consider that comment as an informal suggestion for future rulemaking action.

How Can I Read the Comments Submitted by Other People?

You may read the comments received by Docket Management at the address given above under **ADDRESSES**. The hours of the Docket are indicated above in the same location. You may also see the comments on the Internet. To read the comments on the Internet, take the following steps:

- (1) Go to <http://www.regulations.gov>.
- (2) Check the box for "View results by docket folder."
- (3) In the field marked "Keyword," type in the docket number found at the beginning of this notice.
- (4) On the results page, click on the desired comments. You may download the comments. However, since the comments are imaged documents, instead of word processing documents, the downloaded comments may not be word searchable.

Please note that even after the comment closing date, we will continue to file relevant information in the Docket as it becomes available. Accordingly, we recommend that you periodically check the Docket for new material.

Anyone is able to search the electronic form of all comments received into any of our dockets by the name of the individual submitting the comment (or signing the comment, if submitted on behalf of an association, business, labor union, *etc.*). You may review DOT's complete Privacy Act Statement in the **Federal Register** published on April 11, 2000 (Volume 65, Number 70; Pages 19477–78) or you may visit <http://www.dot.gov/privacy.html>.

Authority: 49 U.S.C. 32902; delegation of authority at 49 CFR 1.50.

Julie Abraham,

Director, International Policy, Fuel Economy and Consumer Programs.

Appendix A

I. Definitions

As used in these appendices—

1. "Automobile," "fuel economy," "manufacturer," and "model year (MY)," have the meaning given them in Section 32901 of Chapter 329 of Title 49 of the United States Code, 49 U.S.C. 32901.
2. "Basic engine" has the meaning given in 40 CFR 600.002–93(a)(21).

3. "Cargo-carrying volume," "gross vehicle weight rating" (GVWR), and "passenger-carrying volume" are used as defined in 49 CFR 523.2.

4. "CARB" means California Air Resource Board.

5. "Domestically manufactured" is used as defined in Section 32904(b)(2) of Chapter 329, 49 U.S.C. 32904(b)(2).

6. "Footprint" means the product of average track width (measured in inches and rounded to the nearest tenth of an inch) times wheelbase (measured in inches and rounded to the nearest tenth of an inch) divided by 144 and then rounded to the nearest tenth of a square foot as described in 49 CFR Part 523.2.

7. "Light truck" means an automobile of the type described in 49 CFR Part 523.3 and 523.5.

8. A "model" of passenger car is a line, such as the Chevrolet Impala, Ford Fusion, Honda Accord, *etc.*, which exists within a manufacturer's fleet.

9. "Model Type" is used as defined in 40 CFR 600.002–93(a)(19).

10. "MY" means model year.

11. "Passenger car" means an automobile of the type described in 49 CFR part 523.3 and 523.4.

12. "Percent fuel economy improvements" means that percentage which corresponds to the amount by which respondent could improve the fuel economy of vehicles in a given model or class through the application of a specified technology, averaged over all vehicles of that model or in that class which feasibly could use the technology. Projections of percent fuel economy improvement should be based on the assumption of maximum efforts by respondent to achieve the highest possible fuel economy increase through the application of the technology (*i.e.*, holding other performance characteristics constant such as 0–60 miles-per-hour (mph) time, towing capacity, *etc.*). The baseline for determination of percent fuel economy improvement is the level of technology and vehicle performance with respect to acceleration and gradeability for respondent's 2008 model year passenger cars or light trucks in the equivalent class.

13. "Percent production implementation rate" means that percentage which corresponds to the maximum number of passenger cars or light trucks of a specified class, which could feasibly employ a given type of technology if respondent made maximum efforts to apply the technology by a specified model year.

14. "Production percentage" means the percent of respondent's passenger cars or light trucks of a specified model projected to be manufactured in a specified model year.

15. "Project" or "projection" refers to the best estimates made by respondent, whether or not based on less than certain information.

16. "Redesign" means any change, or combination of changes, to a vehicle that would change its weight by 50 pounds or more or change its frontal area or aerodynamic drag coefficient by 2 percent or the implementation of new engine or transmission.

17. "Refresh" means any change, or combination of changes, to a vehicle that

would change its weight by less than 50 pounds and would not change its frontal area or aerodynamic drag coefficient.

18. "Relating to" means constituting, defining, containing, explaining, embodying, reflecting, identifying, stating, referring to, dealing with, or in any way pertaining to.

19. "Respondent" means each manufacturer (including all its divisions) providing answers to the questions set forth in this appendix, and its officers, employees, agents or servants.

20. "RPE" means retail price equivalent.

21. "Test Weight" is used as defined in 40 CFR 86.082–2.

22. "Track Width" means the lateral distance between the centerlines of the base tires at ground, including the camber angle.

23. "Truckline" means the name assigned by the Environmental Protection Agency to a different group of vehicles within a make or car division in accordance with that agency's 2001 model year pickup, van (cargo vans and passenger vans are considered separate truck lines), and special purpose vehicle criteria.

24. "Variants of existing engines" means versions of an existing basic engine that differ from that engine in terms of displacement, method of aspiration, induction system or that weigh at least 25 pounds more or less than that engine.

25. "Wheelbase" means the longitudinal distance between front and rear wheel centerlines.

II. Assumptions

All assumptions concerning emission standards, damageability regulations, safety standards, *etc.*, should be listed and described in detail by the respondent.

III. Specifications—Passenger Car and Light Truck Data

Go to <ftp://ftpserver.volpe.dot.gov/pub/CAFE/templates/> for spreadsheet templates.

1. Identify all passenger car and light truck models offered for sale in MY 2008 whose production each respondent projects discontinuing before MY 2012 and identify the last model year in which each will be offered.

2. Identify all basic engines offered by respondent in MY 2008 passenger cars and light trucks which respondent projects it will cease to offer for sale in passenger cars and light trucks before MY 2012, and identify the last model year in which each will be offered.

3. For each model year 2009–2020, list all known or projected car and truck lines and provide the information specified below for each model type. Model types that are essentially identical except for their nameplates (*e.g.*, Ford Fusion/Mercury Milan) may be combined into one item. Engines having the same displacement but belonging to different engine families are to be grouped separately. Within the fleet, the vehicles are to be sorted first by car or truck line, second by basic engine, and third by transmission type. For each model type, a specific indexed engine and transmission are to be identified. As applicable, an indexed predecessor model type is also to be identified. Spreadsheet templates can be found at <ftp://ftpserver.volpe.dot.gov/pub/CAFE/templates/>. These templates include

codes and definitions for the data that the Agency is seeking, including, but not limited to the following:

A. General Information

1. *Vehicle Number*—a unique number assigned to each model.
2. *Manufacturer*—manufacturer's name (e.g., Toyota).
3. *Model*—name of model (e.g., Corolla).
4. *Nameplate*—vehicle nameplate (e.g., Corolla Matrix).
5. *Primary Fuel*—classified as CNG = compressed natural gas; D = diesel; E = electricity; E-85 = ethanol; E100 = neat ethanol; G = gasoline; H = hydrogen; LNG = liquefied natural gas; LPG = propane; M85 = methanol; M100 = neat methanol.
6. *Fuel Economy on Primary Fuel*—measured in miles per gallon; laboratory fuel economy (weighted FTP + highway gasoline-equivalent gallon (GEG), exclusive of any calculation under 49 U.S.C. 32905).
7. *Secondary Fuel*—classified as CNG = compressed natural gas; D = diesel; E = electricity; E-85 = ethanol; E100 = neat ethanol; G = gasoline; H = hydrogen; LNG = liquefied natural gas; LPG = propane; M85 = methanol; M100 = neat methanol.
8. *Fuel Economy on Secondary Fuel*—measured in miles per gallon; laboratory fuel economy (weighted FTP + highway GEG, exclusive of any calculation under 49 U.S.C. 32905).
9. *Tertiary Fuel*—classified as CNG = compressed natural gas; D = diesel; E = electricity; E-85 = ethanol; E100 = neat ethanol; G = gasoline; H = hydrogen; LNG = liquefied natural gas; LPG = propane; M85 = methanol; M100 = neat methanol.
10. *Fuel Economy on Tertiary Fuel*—measured in miles per gallon; laboratory fuel economy (weighted FTP + highway GEG, exclusive of any calculation under 49 U.S.C. 32905).
11. *CAFE Fuel Economy*—measured in miles per gallon; laboratory fuel economy (weighted FTP + highway GEG, inclusive of any calculation under 49 U.S.C. 32905).
12. *Engine Code*—unique number assigned to each engine.
 - A. *Manufacturer*—manufacturer's name (e.g., General Motors, Ford, Toyota, Honda).
 - B. *Name*—name of engine.
 - C. *Configuration*—classified as V = V-shaped; I = inline; R = rotary, H = horizontally opposed (boxer).
 - D. *Primary Fuel*—classified as CNG = compressed natural gas, D = diesel, E85 = ethanol, E100 = neat ethanol, G = gasoline, H = hydrogen, LNG = liquefied natural gas, LPG = propane, M85 = methanol, M100 = neat methanol.
 - E. *Secondary Fuel*—classified as CNG = compressed natural gas, D = diesel, E85 = ethanol, E100 = neat ethanol, G = gasoline, H = hydrogen, LNG = liquefied natural gas, LPG = propane, M85 = methanol, M100 = neat methanol.

F. *Country of Origin*—name of country where engine is manufactured.

G. *Engine Oil Viscosity*—ratio between the applied shear stress and the rate of shear, which measures the resistance of flow of the engine oil (as per SAE Glossary of Automotive Terms); typical values as text include 0W20, 5W20, etc.

H. *Cycle*—combustion cycle of engine; classified as A = Atkinson, AM = Atkinson/Miller, D = Diesel, M = Miller, O = Otto, OA = Otto/Atkinson.

I. *Air/Fuel Ratio*—the weighted (FTP + highway) air/fuel ratio (mass); a number generally around 14.7 for gasoline engines.

J. *Fuel Delivery System*—mechanism that delivers fuel to engine; classified as SGDI = stoichiometric gasoline direct injection; LBGDI = lean-burn gasoline direct injection; SFI = sequential fuel injection; MPFI = multipoint fuel injection; TBI = throttle body fuel injection; CRDI = common rail direct injection (diesel); UDI = unit injector direct injection (diesel).

K. *Aspiration*—breathing or induction process of engine (as per SAE Automotive Dictionary); classified as NA = naturally aspirated, S = supercharged, T = turbocharged, T2 = twin turbocharged, T4 = quad-turbocharged, ST = supercharged and turbocharged.

L. *Valvetrain Design*—design of the total mechanism from camshaft to valve of an engine that actuates the lifting and closing of a valve (as per SAE Glossary of Automotive Terms); classified as CVA = camless valve actuation, DOHC = dual overhead cam, OHV = overhead valve, SOHC = single overhead cam.

M. *Valve Actuation/Timing*—valve opening and closing points in the operating cycle (as per SAE J604); classified as F = fixed, ICP = intake cam phasing, CCP = coupled cam phasing, DCP = dual cam phasing.

N. *Valve Lift*—describes the manner in which the valve is raised during combustion (as per SAE Automotive Dictionary); classified as F = fixed, DVVL = discrete variable valve lift, CVVL = continuously variable valve lift.

O. *Cylinders*—the number of engine cylinders; an integer equaling 3, 4, 5, 6, 8, 10 or 12.

P. *Valves/Cylinder*—the number of valves per cylinder, an integer from 2 through 5.

Q. *Deactivation*—presence of cylinder deactivation mechanism; classified as Y = cylinder deactivation applied; N = cylinder deactivation not applied.

R. *Displacement*—total volume displaced by a piston in a single stroke multiplied by the number of cylinders; measured in liters.

S. *Compression Ratio (min)*—typically a number between 8 and 11; (for fixed CR engines, should be identical to maximum CR).

T. *Compression Ratio (max)*—typically a number between 8 and 20; (for fixed CR

engines, should be identical to minimum CR).

U. *Max. Horsepower*—the maximum power of the engine, measured as horsepower.

V. *Max. Horsepower RPM*—rpm at which maximum horsepower is achieved.

W. *Max. Torque*—the maximum torque of the engine, measured as lb-ft.

X. *Max Torque RPM*—rpm at which maximum torque is achieved.

13. *Transmission Code*—unique number assigned to each transmission.

A. *Manufacturer*—manufacturer's name (e.g., General Motors, Ford, Toyota, Honda).

B. *Name*—name of transmission.

C. *Country of origin*—where the transmission is manufactured.

D. *Type*—type of transmission; classified as M = manual, A = automatic (torque converter), AMT = automated manual transmission (single clutch w/torque interrupt), DCT = dual clutch transmission, CVT1 = belt or chain CVT, CVT2 = other CVT (e.g., toroidal), HEVT = hybrid/electric vehicle transmission (for a BISG or CISG type hybrid, please define the actual transmission used, not HEVT).

E. *Clutch Type*—type of clutch used in AMT or DCT type transmission; D = dry, W = wet.

F. *Number of Forward Gears*—classified as an integer indicating the number of forward gears; "CVT" for a CVT type transmission; or "n/a".

G. *Logic*—indicates aggressivity of automatic shifting; classified as A = aggressive bias toward improving fuel economy, C = conventional shifting. Provide rationale for selection in the transmission notes column.

14. *Origin*—classification (under CAFE program) as domestic or import, D = domestic, I = import.

B. Production

1. *Production*—actual and projected U.S. production for MY 2008 to MY 2020 inclusive, measured in number of vehicles.

2. *Percent of Production Regulated by CARB Standards*—percent of production volume that will be regulated under CARB's AB 1493 for MY 2008 to MY 2020 inclusive.

C. *MSRP*—measured in dollars (2009); actual and projected average MSRP (sales-weighted, including options) for MY 2008 to MY 2020 inclusive.

D. Vehicle Information

1. *Subclass*—for technology application purposes only and should not be confused with vehicle classification for regulatory purposes; classified as Subcompact, Subcompact Performance, Compact, Compact Performance, Midsize, Midsize Performance, Large, Large Performance, Minivan, Small LT, Midsize LT, Large LT; where LT = SUV/Pickup/Van; use tables below, with example vehicles, to place vehicles into most appropriate subclass.

Subclass	Example (MY 2008) vehicles
Subcompact	Chevy Aveo, Honda Civic, Volkswagen New Beetle.
Subcompact Performance	Audi TT, Mazda Miata, Subaru Impreza.
Compact	Chevy Cobalt, Ford Focus, Nissan Sentra.

Subclass	Example (MY 2008) vehicles
Compact Performance	Audi S4 Quattro, Mazda RX8, Mitsubishi Lancer Evolution.
Midsize	Honda Accord, Hyundai Azera, Toyota Camry.
Midsize Performance	Chevy Corvette, Ford Mustang GT, Nissan G37 Coupe.
Large	Audi A8, Cadillac CTS, Ford Taurus.
Large Performance	Bentley Arnage, BMW M5, Daimler CL600.
Minivans	Dodge Caravan, Toyota Sienna.
Small SUV/Pickup/Van	Ford Ranger, Nissan Rogue, Toyota RAV4.
Midsize SUV/Pickup/Van	Jeep Wrangler 4-door, Mazda CX-9, Toyota Tacoma.
Large SUV/Pickup/Van	Chevy Silverado, Ford Econoline, Toyota Sequoia.

2. *Style*—classified as Convertible, Coupe, Hatchback, Sedan, Minivan, Pickup, Sport Utility, Van, Wagon.

3. *Light Truck Indicator*—an integer(s); a unique number(s) assigned to each vehicle which represents the design feature(s) that classify it as a light truck; classified as:

(0) The vehicle neither has off-road design features (defined under 49 CFR 523.5(b) and described by numbers 1 and 2 below) nor has functional characteristics (defined under 49 CFR 523.5(a) and described by numbers 3 through 7 below) that would allow it to be properly classified as a light truck, thus the vehicle is properly classified as a passenger car.

> An automobile capable of off-highway operation, as indicated by the fact that it:

(1) (i) Has 4-wheel drive; or
(ii) Is rated at more than 6,000 pounds gross vehicle weight; and

(2) Has at least four of the following characteristics calculated when the automobile is at curb weight, on a level surface, with the front wheels parallel to the automobile's longitudinal centerline, and the tires inflated to the manufacturer's recommended pressure—

(i) Approach angle of not less than 28 degrees.

(ii) Breakover angle of not less than 14 degrees.

(iii) Departure angle of not less than 20 degrees.

(iv) Running clearance of not less than 20 centimeters.

(v) Front and rear axle clearances of not less than 18 centimeters each.

> An automobile designed to perform at least one of the following functions:

(3) Transport more than 10 persons;

(4) Provide temporary living quarters;

(5) Transport property on an open bed;

(6) Provide, as sold to the first retail purchaser, greater cargo-carrying than passenger-carrying volume, such as in a cargo van; if a vehicle is sold with a second-row seat, its cargo-carrying volume is determined with that seat installed, regardless of whether the manufacturer has described that seat as optional; or

(7) Permit expanded use of the automobile for cargo-carrying purposes or other nonpassenger-carrying purposes through:

(i) For non-passenger automobiles manufactured prior to model year 2012, the removal of seats by means installed for that purpose by the automobile's manufacturer or with simple tools, such as screwdrivers and wrenches, so as to create a flat, floor level,

surface extending from the forwardmost point of installation of those seats to the rear of the automobile's interior; or

(ii) For non-passenger automobiles manufactured in model year 2008 and beyond, for vehicles equipped with at least 3 rows of designated seating positions as standard equipment, permit expanded use of the automobile for cargo-carrying purposes or other nonpassenger-carrying purposes through the removal or stowing of foldable or pivoting seats so as to create a flat, leveled cargo surface extending from the forwardmost point of installation of those seats to the rear of the automobile's interior.

4. *Structure*—classified as either L = Ladder or U = Unibody.

5. *Drive*—classified as A = all-wheel drive; F = front-wheel drive; R = rear-wheel-drive; 4 = 4-wheel drive.¹

6. *Axle Ratio*—ratio of the speed of the drive shaft to the speed of the driven wheels.

7. *Length*—measured in inches; defined per SAE J1100, L103 (Sept. 2005).

8. *Width*—measured in inches; defined per SAE J1100, W116 (Sept. 2005).

9. *Wheelbase*—measured to the nearest tenth of an inch; defined per SAE J1100, L101 (Sept. 2005), and clarified above.

10. *Track Width (front)*—measured to the nearest tenth of an inch; defined per SAE J1100, W101-1 (Sept. 2005), and clarified above.

11. *Track Width (rear)*—measured to the nearest tenth of an inch; defined per SAE J1100, W101-2 (Sept. 2005), and clarified above.

12. *Footprint*—the product of average track width (measured in inches and rounded to the nearest tenth of an inch) times wheelbase (measured in inches and rounded to the nearest tenth of an inch) divided by 144 and then rounded to the nearest tenth of a square foot; Defined per 49 CFR 523.2.

13. *Base Tire*—the tire specified as standard equipment by a manufacturer on each vehicle configuration of a model type; (e.g. 275/40R17)

14. *Running Clearance*—measured in centimeters; defined per 49 CFR 523.2.

15. *Front Axle Clearance*—measured in centimeters; defined per 49 CFR 523.2.

16. *Rear Axle Clearance*—measured in centimeters; defined per 49 CFR 523.2.

17. *Approach Angle*—measured in degrees; defined per 49 CFR 523.2.

¹ NHTSA considers "4-wheel drive" to refer only to vehicles that have selectable 2- and 4-wheel drive options, as opposed to all-wheel drive, which is not driver-selectable.

18. *Breakover Angle*—measured in degrees; defined per 49 CFR 523.2.

19. *Departure Angle*—measured in degrees; defined per 49 CFR 523.2.

20. *Curb Weight*—total weight of vehicle including batteries, lubricants, and other expendable supplies but excluding the driver, passengers, and other payloads, measured in pounds; per SAE J1100 (Sept. 2005)

21. *Test Weight*—weight of vehicle as tested, including the driver, operator (if necessary), and all instrumentation (as per SAE J1263); measured in pounds.

22. *GVWR*—Gross Vehicle Weight Rating; as defined per 49 CFR 523.2 measured in pounds.

23. *Towing Capacity (Maximum)*—measured in pounds.

24. *Payload*—measured in pounds.

25. *Cargo volume behind the front row*—measured in cubic feet, defined per Table 28 of SAE J1100 (Sept. 2005)

26. *Cargo volume behind the second row*—measured in cubic feet, defined per Table 28 of SAE J1100 (Sept. 2005)

27. *Cargo volume behind the third row*—measured in cubic feet, defined per Table 28 of SAE J1100 (Sept. 2005)

28. *Enclosed Volume*—measured in cubic feet.

29. *Passenger Volume*—measured in cubic feet; the volume measured using SAE J1100 as per EPA Fuel Economy regulations (40 CFR 600.315-82, "Classes of Comparable Automobiles"). This is the number that manufacturers calculate and submit to EPA.

30. *Cargo Volume Index*—defined per Table 28 of SAE J1100 (Sept. 2005)

31. *Luggage Capacity*—measured in cubic feet; defined per SAE J1100, V1 (Sept. 2005)

32. *Seating (max)*—number of usable seat belts before folding and removal of seats (where accomplished without special tools); provided in integer form.

33. *Number of Standard Rows of Seating*—number of rows of seats that each vehicle comes with as standard equipment; provided in integer form (e.g., 1,2,3,4, or 5).

34. *Frontal Area*—a measure of the wind profile of the vehicle, typically calculated as the height times width of a vehicle body, e.g., 25 square feet.

35. *Aerodynamic Drag Coefficient, C_d*—a dimensionless coefficient that relates the motion resistance force created by the air drag over the entire surface of a moving vehicle to the force of dynamic air pressure acting only over the vehicle's frontal area, e.g., 0.25.

36. *Tire Rolling Resistance, C_{rr}* —a dimensionless coefficient that relates the motion resistance force due to tire energy losses (e.g., deflection, scrubbing, slip, and air drag) to a vehicle's weight, e.g., 0.0012. Normalized on (pound force/1000 pound) basis.

37. *Fuel Capacity*—measured in gallons of diesel fuel or gasoline; MJ (LHV) of other fuels (or chemical battery energy)

38. *Electrical System Voltage*—measured in volts, e.g., 12 volt, 42 volts 2005)

39. *Power Steering*—H = hydraulic; E = electric; EH = electro-hydraulic

40. Percent of Production Volume Equipped with air conditioning (A/C)

41. *A/C Refrigerant Type*—e.g. HFC—134a; HFC—152a; CO₂

42. *A/C Compressor Displacement*—measured in cubic centimeters

43. *A/C CARB credit*—measured in grams per mile; g/mile CO₂ equivalent as reportable under California ARB's AB 1493 Regulation

44. *N₂O Emission Rate*—measured in grams per mile; as reportable under California ARB's AB 1493 Regulation

45. *CH₄ Emission Rate*—measured in grams per mile; as reportable under California ARB's AB 1493 Regulation

46. *Estimated Total CARB Credits*—measured in grams per mile; g/mile CO₂ equivalent as reportable under California ARB's AB 1493 Regulation

E. Hybridization/Electrification

1. *Type of Hybrid/Electric vehicle*—classified as MHEV = 12V micro hybrid, BISG = belt mounted integrated starter generator, CISG = crank mounted integrated starter generator, PSHEV = power-split hybrid, 2MHEV = 2-mode hybrid, PHEV = plug-in hybrid, EV = electric vehicle, H = hydraulic hybrid, P = pneumatic hybrid.

2. Voltage (volts) or, for hydraulic hybrids, pressure (psi)

3. *Energy storage capacity*—measured in MJ.

4. *Electric Motor Power Rating*—measured in hp or kW.

5. *Battery type*—classified as NiMH = Nickel Metal Hydride; Li-ion = Lithium Ion.

6. *Battery Only Range (charge depleting PHEV)*—measured in miles.

7. *Maximum Battery Only Vehicle Speed*—measured in miles per hour; maximum speed at which a HEV can still operate solely on battery power measured on a flat road using the vehicle's FTP weight.

8. Percentage of braking energy recovered and stored over weighted FTP + highway drive cycle.

9. Percentage of maximum motive power provided by stored energy system

10. *Electrified Accessories*—list of electrified accessories; classified as WP = water (coolant) pump; OP = oil pump; AC = air conditioner compressor.

F. *Energy Consumption*²—of total fuel energy (higher heating value) consumed over FTP city and highway tests (each weighted as

for items 5 and 6 above), shares attributable to the following loss mechanisms, such that the sum of the shares equals one

1. System irreversibility governed by the Second Law of Thermodynamics.

2. Heat lost to the exhaust and coolant streams.

3. Engine friction (i.e., the part of mechanical efficiency lost to friction in such engine components as bearings and rods, as could be estimated from engine dynamometer test results)

4. Pumping losses (i.e., the part of mechanical efficiency lost to work done on gases inside the cylinder, as could be estimated from engine dynamometer test results)

5. Accessory losses (i.e., the part of fuel efficiency lost to work done by engine-driven accessories, as could be estimated from bench test results for the individual components)

6. Transmission losses (i.e., the part of driveline efficiency lost to friction in such transmission components as gears, bearings, and hydraulics, as could be estimated from chassis dynamometer test results)

7. Aerodynamic drag of the body, as could be estimated from coast-down test results.

8. Rolling resistance in the tires, as could be estimated from coast-down test results.

9. Work done on the vehicle itself, as could be estimated from the vehicle's inertia mass and the fuel economy driving cycles.

G. Planning and Assembly

1. *U.S. Content*—overall percentage, by value, that originated in the U.S.

2. *Canadian Content*—overall percentage, by value, that originated in Canada.

3. *Mexican Content*—overall percentage, by value, that originated in Mexico.

4. *Domestic Content*—overall percentage, by value, that originated in the U.S, Canada and Mexico.

5. Final Assembly City.

6. Final Assembly State/Province (if applicable)

7. Final Assembly Country.

8. *Predecessor*—number (or name) of model upon which current model is based, if any.

9. *Refresh Years*—model years of most recent and future refreshes through the 2020 time period; e.g., 2010, 2015, 2020.

10. *Redesign Years*—model years of most recent and future redesigns through the 2020 time period; e.g., 2007, 2012, 2017; where redesign means any change or combination of changes to a vehicle that would change its weight by 50 pounds or more or change its frontal area or aerodynamic drag coefficient by 2 percent or more.

11. *Employment Hours Per Vehicle*—number of hours of U.S. labor applied per vehicle produced.

H. The agency also requests that each manufacturer provide an estimate of its overall passenger car CAFE and light truck CAFE for each model year. This estimate should be included as an entry in the spreadsheets that are submitted to the agency.

4. As applicable, please explain the differences between the product plans submitted in response to the March 2009

product plan request and the product plans being submitted in response to this request.

5. Relative to MY 2008 levels, for MYs 2009–2020 please provide information, by carline and as an average effect on a manufacturer's entire passenger car fleet and by truckline and as an average effect on a manufacturer's entire light truck fleet, on the weight (increases or decreases) and/or fuel economy impacts of the following standards or equipment:

A. Federal Motor Vehicle Safety Standard (FMVSS No. 208) Automatic Restraints;

B. FMVSS No. 201 Occupant Protection in Interior Impact ;

C. Voluntary installation of safety equipment (e.g., antilock brakes);

D. Environmental Protection Agency regulations ;

E. California Air Resources Board requirements;

F. Other applicable motor vehicle regulations affecting fuel economy.

6. For each specific model year and model of respondent's passenger car and light truck fleets projected to implement one or more of the following and/or any other weight reduction methods:

A. Substitution of materials;

B. "Downsizing" of existing vehicle design, dimensions (interior and exterior), footprint, systems or components ;

C. Use of new vehicle, structural, system or component designs.

Please provide the following information:

(i) Description of the method, for example:

—For material substitution, substituting a composite body panel for a steel panel;

—For downsizing, reducing front, rear, or side overhang (the dimensions of the vehicle outside the "footprint" area), or reducing track width or wheelbase;

—For use of new vehicle, structural, system or component designs, replacing a body-on-frame structure with a unibody structure, or replacing an existing fuel tank with a smaller fuel tank (i.e., maintaining range).

(ii) The weight reduction, in pounds, averaged over the model;

(iii) The percent fuel economy improvement averaged over the model;

(iv) The basis for your answer to (iii), (e.g., data from dynamometer tests conducted by respondent, engineering analysis, computer simulation, reports of test by others);

(v) The incremental RPE cost (in 2007 dollars), averaged over the model, associated with the method;

(vi) The percent production implementation rate and the reasons limiting the implementation rate

7. For each specific model year and model of respondent's passenger car and light truck fleets projected to implement one or more of the following and/or any other aerodynamic drag reduction methods:

A. Revised exterior components (e.g., front fascia or side view mirrors);

B. Addition of underbody panels;

C. Vehicle design changes (e.g., change in ride height or optimized cooling flow path)

Please provide the following information:

(i) Description of the method/aerodynamic change

(ii) The percent reduction of the aerodynamic drag coefficient (C_d) and the C_d

² This information is sought in order to account for a given vehicle model's fuel economy as partitioned into nine energy loss mechanisms. The agency may use this information to estimate the extent to which a given technology reduces losses in each mechanism.

prior to the reduction, averaged over the model;

(iii) The percent fuel economy improvement averaged over the model;

(iv) The basis for your answer to (iii), (e.g., data from dynamometer tests conducted by respondent, wind tunnel testing, engineering analysis, computer simulation, reports of test by others);

(v) The incremental RPE cost (in 2007 dollars), averaged over the model, associated with the method;

(vi) The percent production implementation rate and the reasons limiting the implementation rate

8. For each specific model year and model of respondent's passenger car and light truck fleets projected to implement one or more of the following and/or any other A/C leakage reduction or A/C efficiency improvement methods:

- A. Low permeation hoses;
- B. Improved system fittings, connections and seals (including compressor shaft seal);
- C. Externally controlled fixed or variable displacement compressor;
- D. Automatic default to recirculated cabin air;
- E. Improved blower and fan motor controls;
- F. Electronic expansion valve;
- G. Improved-efficiency evaporators and condensers;
- H. Oil separator.

Please provide the following information:

(i) Description of the method, (e.g., implementation of electronic control valve)

(ii) The g/mile CO₂ equivalent as reportable under California ARB's AB 1493 Regulation, averaged over the model;

(iii) The basis for your answer to (ii), (e.g., data from dynamometer tests conducted by respondent, engineering analysis, computer simulation, reports of test by others);

(iv) The incremental RPE cost (in 2007 dollars), averaged over the model, associated with the method;

(v) The percent production implementation rate and the reasons limiting the implementation rate

9. Indicate any MY 2009–2020 passenger car and light truck model types that have higher average test weights than comparable MY 2008 model types. Describe the reasons for any weight increases (e.g., increased option content, less use of premium materials) and provide supporting justification.

10. Please provide your estimates of projected *total industry* U.S. passenger car sales and light truck sales, separately, for each model year from 2009 through 2020, inclusive.

11. Please provide your company's assumptions for U.S. gasoline and diesel fuel prices during 2009 through 2020.

12. Please provide projected production capacity available for the North American market (at standard production rates) for each of your company's passenger carline and light truckline designations during MYs 2009–2020.

13. Please provide your estimate of production lead-time for new models, your expected model life in years, and the number of years over which tooling costs are

amortized. Additionally, the agency is requesting that manufactures provide vehicle or design changes that characterize a freshening and those changes that characterize a redesign.

IV. Technologies, Cost and Potential Fuel Economy Improvements

Spreadsheet templates for the tables mentioned in the following section can be found at <ftp://ftpserver.volpe.dot.gov/pub/cafe/templates/>.

1. The agency requests that manufacturers, for each passenger car and light truck model projected to be manufactured by respondent between MY 2009–2020, provide the following information on new technology, including A/C technologies that will be eligible under EPA's proposed GHG standards, applications:

(i) Description of the nature of the technological improvement; including the vehicle's baseline technology that the technology replaces (e.g., 6-speed automatic transmission replacing a 4-speed automatic transmission)

(ii) The percent fuel economy improvement or the g/mile CO₂ equivalent reduction for A/C technologies, averaged over the model; please indicate if the weight saving (or increase), associated with the implementation of the technology, is accounted for in the fuel economy improvement estimate.

(iii) The basis for your answer to (ii), (e.g., data from dynamometer tests conducted by respondent, engineering analysis, computer simulation, reports of test by others);

(iv) The incremental RPE cost (in 2007 dollars), averaged over the model, associated with implementing the new technology;

(v) The percent production implementation rate and the reasons limiting the implementation rate

In regards to costs, the agency is requesting information on cost reductions available through learning effects that are anticipated, so information should be provided regarding what the learning effects are, when and at what production volumes they occur, and to what degrees such learning is expected to be available.³ The agency is also asking that the RPE markup factor (used to determine the RPE cost estimates) is stated in the response.

2. Additionally, the agency requests that manufactures and other interested parties provide the same information, as requested above, for the technologies listed in the

³ "Learning effects" describes the reduction in unit production costs as a function of accumulated production volume and small redesigns that reduce costs. Applying learning effects, or "curves," requires estimates of three parameters: (1) The initial production volume that must be reached before cost reductions begin to be realized (referred to as "threshold volume"); (2) the percent reduction in average unit cost that results from each successive doubling of cumulative production volume (usually referred to as the "learning rate"); and (3) the initial cost of the technology. The method applies this effect for up to two doublings of production volume. For example, a 20 percent learning effect would be applied once at the 300,000 unit threshold volume and an additional 20 percent learning would be applied at a volume of 600,000, resulting in total reduction cost of 36 percent.

following tables and any other potential technologies that may be implemented to improve fuel economy. These potential technologies can be inserted into additional rows at the end of each table. Examples of other potential technologies could include but are not limited to: Homogenous Charge Compression Ignition (HCCI), Electric Vehicle (EV), Fuel Cell Vehicle and Belt Mounted Integrated Starter Generator (BISG) and Crank Mounted Integrated Starter Generator (CISG) specific technologies. In an effort to standardize the information received the agency requests that if possible respondents fill in the following tables:

Table IV–1 with estimates of the model year of availability for each technology listed and any other identified technology.

Table IV–2 with estimated phase-in rates⁴ by year for each technology listed and any other additional technologies. Engineering, planning and financial constraints can prohibit many technologies from being applied across an entire fleet of vehicles within a year, so the agency requests information on possible constraints on the rates at which each technology can penetrate a manufacturer's fleet.

Tables IV–3a, b and IV–4a, b with estimates for incremental RPE costs (in 2007 dollars) and incremental fuel consumption reductions for each technology listed and any other additional technologies. These estimates, for the technologies already listed, should assume that the preceding technologies, as defined by the decision trees in Appendix B, have already been applied and/or will be superseded. The agency is requesting that respondents fill in incremental RPE costs and fuel consumption reductions estimates for all vehicle subclasses listed. If a respondent feels that the incremental RPE cost and fuel consumption reduction estimates are similar for different subclasses they may combine subclasses.

Table IV–5 with estimates for the percentage by which each technology reduces energy losses attributable to each of nine energy loss mechanisms.

Tables IV–6a, b with estimates for synergies⁵ that can occur when multiple technologies are applied.

⁴ In NHTSA's 2006 rulemaking establishing CAFE standards for MY 2008–2011 light trucks, the agency considered phase-in caps by ceasing to add a given technology to a manufacturer's fleet in a specific model year once it has increased the corresponding penetration rate by at least the amount of the cap. Having done so, it applied other technologies in lieu of the "capped" technology.

⁵ When two or more technologies are added to a particular vehicle model to improve its fuel efficiency, the resultant fuel consumption reduction may sometimes be higher or lower than the product of the individual effectiveness values for those items. This may occur because one or more technologies applied to the same vehicle partially address the same source or sources of engine or vehicle losses. Alternately, this effect may be seen when one technology shifts the engine operating points, and therefore increases or reduces the fuel consumption reduction achieved by another technology or set of technologies. The difference between the observed fuel consumption reduction associated with a set of technologies and the product of the individual effectiveness values in that set is sometimes referred to as a "synergy."

3. The agency also asks that manufacturers or other interested parties provide information on appropriate sequencing of technologies, so that accumulated cost and fuel consumption effects may be evaluated incrementally. As examples of possible technology sequences, "decision trees" are shown in Appendix B below.

4. For each new or redesigned vehicle identified in response to Question III-3 and each new engine or fuel economy

Synergies may be positive (increased fuel consumption reduction compared to the product of the individual effects) or negative (decreased fuel consumption reduction).

improvement identified in your response to Questions IV-1 and IV-2 provide your best estimate of the following, in terms of constant 2007 dollars:

A. Total capital costs required to implement the new/redesigned model or improvement according to the implementation schedules specified in your response. Subdivide the capital costs into tooling, facilities, launch, and engineering costs.

B. The maximum production capacity, expressed in units of capacity per year, associated with the capital expenditure in (a) above. Specify the number of production

shifts on which your response is based and define "maximum capacity" as used in your answer.

C. The actual capacity that is planned to be used each year for each new/redesigned model or fuel economy improvement.

D. The increase in variable costs per affected unit, based on the production volume specified in (b) above.

E. The equivalent retail price increase per affected vehicle for each new/redesigned model or improvement. Provide an example describing methodology used to determine the equivalent retail price increase.

BILLING CODE P

Table IV-1: List of Technologies and Year of Availability

Technology	Model Abbreviation	Year Available
Low Friction Lubricants	LUB	
Engine Friction Reduction	EFR	
VVT - Coupled Cam Phasing (CCP) on SOHC	CCPS	
Discrete Variable Valve Lift (DVVL) on SOHC	DVVLS	
Cylinder Deactivation on SOHC	DEACS	
VVT - Intake Cam Phasing (ICP)	ICP	
VVT - Dual Cam Phasing (DCP)	DCP	
Discrete Variable Valve Lift (DVVL) on DOHC	DVVLD	
Continuously Variable Valve Lift (CVVL)	CVVL	
Cylinder Deactivation on DOHC	DEADD	
Cylinder Deactivation on OHV	DEACO	
VVT - Coupled Cam Phasing (CCP) on OHV	CCPO	
Discrete Variable Valve Lift (DVVL) on OHV	DVVLO	
Conversion to DOHC with DCP	CDOHC	
Stoichiometric Gasoline Direct Injection (GDI)	SGDI	
Combustion Restart	CBRST	
Turbocharging and Downsizing	TRBDS	
Exhaust Gas Recirculation (EGR) Boost	EGRB	
Conversion to Diesel following CBRST	DSLCL	
Conversion to Diesel following TRBDS	DSLTL	
6-Speed Manual/Improved Internals	6MAN	
Improved Auto. Trans. Controls/Externals	IATC	
Continuously Variable Transmission	CVT	
6/7/8-Speed Auto. Trans with Improved Internals	NAUTO	
Dual Clutch or Automated Manual Transmission	DCTAM	
Electric Power Steering	EPS	
Improved Accessories	IACC	
12V Micro-Hybrid	MHEV	
Belt Integrated Starter Generator	BISG	
Crank Integrated Starter Generator	CISG	
Power Split Hybrid	PSHEV	
2-Mode Hybrid	2MHEV	
Plug-in Hybrid	PHEV	
Mass Reduction 1 (1.5%)	MS1	
Mass Reduction 2 (3.5% – 8.5%)	MS2	
Low Rolling Resistance Tires	ROLL	
Low Drag Brakes	LDB	
Secondary Axle Disconnect 4WD	SAX	
Aero Drag Reduction	AERO	

Table IV-2: Phase-In Caps

[illegible]

Table IV-3a: Technology Cost Estimates

VEHICLE TECHNOLOGY RPE INCREMENTAL COSTS PER VEHICLE (2007\$) BY VEHICLE SUBCLASS							
TECHNOLOGY	Abrev.	Subcompact	Performance Subcompact	Compact	Performance Compact	Midsize	Performance Midsize
		Car	Car	Car	Car	Car	Car
Low Friction Lubricants	LUB						
Engine Friction Reduction	EFR						
VVT - Coupled Cam Phasing (CCP) on SOHC	CCPS						
Discrete Variable Valve Lift (DVVL) on SOHC	DVVL						
Cylinder Deactivation on SOHC	DEACS						
VVT - Intake Cam Phasing (ICP)	ICP						
VVT - Dual Cam Phasing (DCP)	DCP						
Discrete Variable Valve Lift (DVVL) on DOHC	DVVL						
Continuously Variable Valve Lift (CVVL)	CVVL						
Cylinder Deactivation on DOHC	DEACO						
Cylinder Deactivation on OHV	DEACO						
VVT - Coupled Cam Phasing (CCP) on OHV	CCPO						
Discrete Variable Valve Lift (DVVL) on OHV	DVVL						
Conversion to DOHC with DCP	CDOHC						
Stoichiometric Gasoline Direct Injection (GDI)	SGDI						
Combustion Restart	CBRST						
Turbocharging and Downsizing	TRBDS						
Exhaust Gas Recirculation (EGR) Boost	EGRB						
Conversion to Diesel following CBRST	DSL						
Conversion to Diesel following TRBDS	DSL						
6-Speed Manual/Improved Internals	6MAN						
Improved Auto. Trans. Controls/Externals	IATC						
Continuously Variable Transmission	CVT						
6/7/8-Speed Auto. Trans with Improved Internals	NAUTO						
Dual Clutch or Automated Manual Transmission	DCTAM						
Electric Power Steering	EPS						
Improved Accessories	IACC						
12V Micro-Hybrid	MHEV						
Belt Integrated Starter Generator	BISG						
Crank Integrated Starter Generator	CISG						
Power Split Hybrid	PSHEV						
2-Mode Hybrid	2MHEV						
Plug-in Hybrid	PHEV						
Mass Reduction 1 (1.5%)	MS1						
Mass Reduction 2 (3.5%-8.5%)	MS2						
Low Rolling Resistance Tires	ROLL						
Low Drag Brakes	LDB						
Secondary Axle Disconnect	SAX						
Aero Drag Reduction	AERO						

Table IV-3b: Technology Cost Estimates

VEHICLE TECHNOLOGY RPE INCREMENTAL COSTS PER VEHICLE (2007\$) BY VEHICLE SUBCLASS							
		Large	Performance	Minivan	Small	Midsized	Large
TECHNOLOGY		Car	Car	LT	LT	LT	LT
Low Friction Lubricants	LUB						
Engine Friction Reduction	EFR						
VVT - Coupled Cam Phasing (CCP) on SOHC	CCPS						
Discrete Variable Valve Lift (DVVL) on SOHC	DVVL						
Cylinder Deactivation on SOHC	DEACS						
VVT - Intake Cam Phasing (ICP)	ICP						
VVT - Dual Cam Phasing (DCP)	DCP						
Discrete Variable Valve Lift (DVVL) on DOHC	DVVL						
Continuously Variable Valve Lift (CVVL)	CVVL						
Cylinder Deactivation on DOHC	DEACD						
Cylinder Deactivation on OHV	DEACO						
VVT - Coupled Cam Phasing (CCP) on OHV	CCPO						
Discrete Variable Valve Lift (DVVL) on OHV	DVVO						
Conversion to DOHC with DCP	CDOHC						
Stoichiometric Gasoline Direct Injection (GDI)	SGDI						
Combustion Restart	CBRST						
Turbocharging and Downsizing	TRBDS						
Exhaust Gas Recirculation (EGR) Boost	EGRB						
Conversion to Diesel following CBRST	DSL						
Conversion to Diesel following TRBDS	DSL						
6-Speed Manual/Improved Internals	6MAN						
Improved Auto. Trans. Controls/Externals	IATC						
Continuously Variable Transmission	CVT						
6/7/8-Speed Auto. Trans with Improved Internals	NAUTO						
Dual Clutch or Automated Manual Transmission	DCTAM						
Electric Power Steering	EPS						
Improved Accessories	IACC						
12V Micro-Hybrid	MHEV						
Belt Integrated Starter Generator	BISG						
Crank Integrated Starter Generator	CISG						
Power Split Hybrid	PSHEV						
2-Mode Hybrid	2MHEV						
Plug-in Hybrid	PHEV						
Mass Reduction 1 (1.5%)	MS1						
Mass Reduction 2 (3.5%-8.5%)	MS2						
Low Rolling Resistance Tires	ROLL						
Low Drag Brakes	LDB						
Secondary Axle Disconnect	SAX						
Aero Drag Reduction	AERO						

Table IV-4a: Technology Effectiveness Estimates

VEHICLE TECHNOLOGY INCREMENTAL FUEL CONSUMPTION REDUCTION (-%) BY VEHICLE SUBCLASS							
		Subcompact	Performance	Compact	Performance	Midsized	Performance
		Car	Subcompact	Car	Compact	Car	Midsized
TECHNOLOGY	Abrev.	Car	Car	Car	Car	Car	Car
Low Friction Lubricants	LUB						
Engine Friction Reduction	EFR						
VVT - Coupled Cam Phasing (CCP) on SOHC	CCPS						
Discrete Variable Valve Lift (DVVL) on SOHC	DVVL						
Cylinder Deactivation on SOHC	DEACS						
VVT - Intake Cam Phasing (ICP)	ICP						
VVT - Dual Cam Phasing (DCP)	DCP						
Discrete Variable Valve Lift (DVVL) on DOHC	DVVL						
Continuously Variable Valve Lift (CVVL)	CVVL						
Cylinder Deactivation on DOHC	DEACD						
Cylinder Deactivation on OHV	DEACO						
VVT - Coupled Cam Phasing (CCP) on OHV	CCPO						
Discrete Variable Valve Lift (DVVL) on OHV	DVVL						
Conversion to DOHC with DCP	CDOHC						
Stoichiometric Gasoline Direct Injection (GDI)	SGDI						
Combustion Restart	CBRST						
Turbocharging and Downsizing	TRBDS						
Exhaust Gas Recirculation (EGR) Boost	EGRB						
Conversion to Diesel following CBRST	DSL						
Conversion to Diesel following TRBDS	DSL						
6-Speed Manual/Improved Internals	6MAN						
Improved Auto. Trans. Controls/Externals	IATC						
Continuously Variable Transmission	CVT						
6/7/8-Speed Auto. Trans with Improved	NAUTO						
Dual Clutch or Automated Manual	DCTAM						
Electric Power Steering	EPS						
Improved Accessories	IACC						
12V Micro-Hybrid	MHEV						
Belt Integrated Starter Generator	BISG						
Crank Integrated Starter Generator	CISG						
Power Split Hybrid	PSHEV						
2-Mode Hybrid	2MHEV						
Plug-in Hybrid	PHEV						
Mass Reduction 1 (1.5%)	MS1						
Mass Reduction 2 (3.5%-8.5%)	MS2						
Low Rolling Resistance Tires	ROLL						
Low Drag Brakes	LDB						
Secondary Axle Disconnect	SAX						
Aero Drag Reduction	AERO						

Table IV-4b: Technology Effectiveness Estimates

VEHICLE TECHNOLOGY INCREMENTAL FUEL CONSUMPTION REDUCTION (-%) BY VEHICLE SUBCLASS							
TECHNOLOGY		Large Car	Performance Large Car	Minivan LT	Small LT	Midsize LT	Large LT
TECHNOLOGY	Abrev.						
Low Friction Lubricants	LUB						
Engine Friction Reduction	EFR						
VVT - Coupled Cam Phasing (CCP) on SOHC	CCPS						
Discrete Variable Valve Lift (DVVL) on SOHC	DVVL						
Cylinder Deactivation on SOHC	DEACS						
VVT - Intake Cam Phasing (ICP)	ICP						
VVT - Dual Cam Phasing (DCP)	DCP						
Discrete Variable Valve Lift (DVVL) on DOHC	DVVL						
Continuously Variable Valve Lift (CVVL)	CVVL						
Cylinder Deactivation on DOHC	DEACD						
Cylinder Deactivation on OHV	DEACO						
VVT - Coupled Cam Phasing (CCP) on OHV	CCPO						
Discrete Variable Valve Lift (DVVL) on OHV	DVVL						
Conversion to DOHC with DCP	CDOHC						
Stoichiometric Gasoline Direct Injection (GDI)	SGDI						
Combustion Restart	CBRST						
Turbocharging and Downsizing	TRBDS						
Exhaust Gas Recirculation (EGR) Boost	EGRB						
Conversion to Diesel following CBRST	DSL						
Conversion to Diesel following TRBDS	DSL						
6-Speed Manual/Improved Internals	6MAN						
Improved Auto. Trans. Controls/Externals	IATC						
Continuously Variable Transmission	CVT						
6/7/8-Speed Auto. Trans with Improved	NAUTO						
Dual Clutch or Automated Manual	DCTAM						
Electric Power Steering	EPS						
Improved Accessories	IACC						
12V Micro-Hybrid	MHEV						
Belt Integrated Starter Generator	BISG						
Crank Integrated Starter Generator	CISG						
Power Split Hybrid	PSHEV						
2-Mode Hybrid	2MHEV						
Plug-in Hybrid	PHEV						
Mass Reduction 1 (1.5%)	MS1						
Mass Reduction 2 (3.5%-8.5%)	MS2						
Low Rolling Resistance Tires	ROLL						
Low Drag Brakes	LDB						
Secondary Axle Disconnect	SAX						
Aero Drag Reduction	AERO						

Table IV-5: Energy Loss Mechanism Estimates

[illegible]

Table IV-6a: Technology Synergy Estimates

[illegible]

Table IV-6b: Technology Synergy Estimates[illegible]

Appendix B. Technology Decision Trees

Figure 1. Engine Technology Decision Tree

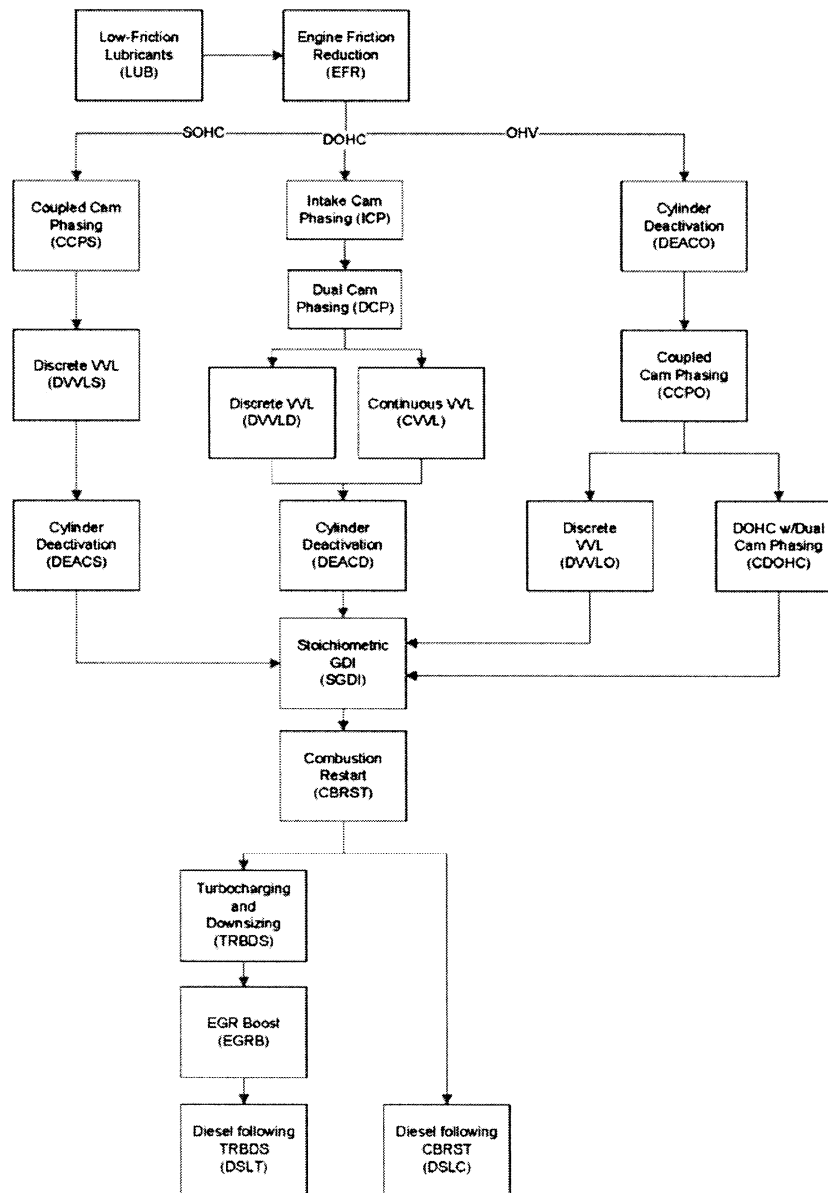


Figure 2. Electrification/Accessory, Transmission and Hybrid Technology Decision Tree

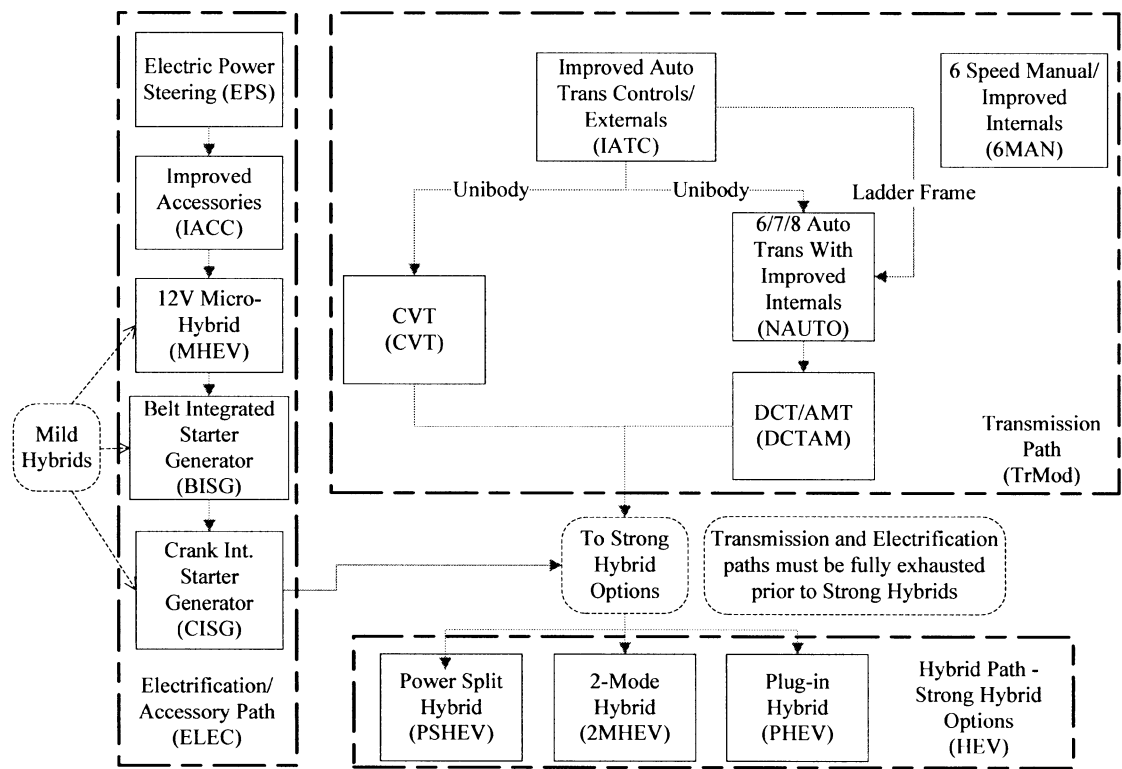
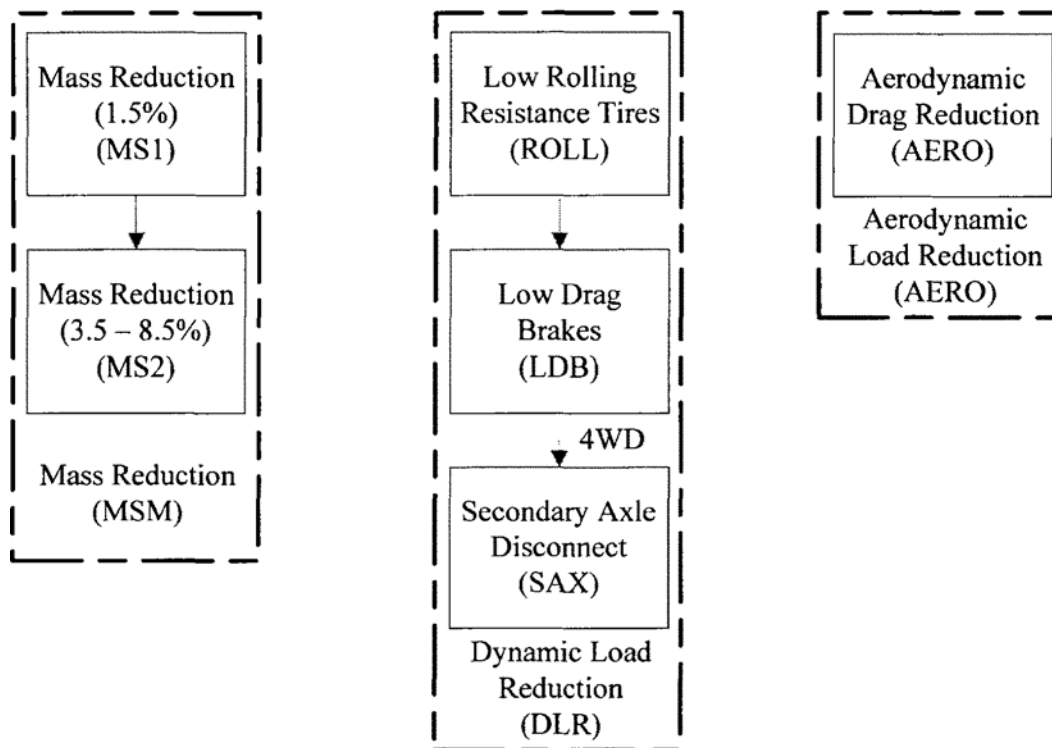


Figure 3. Vehicle Technology Decision Tree

[FR Doc. E9-22737 Filed 9-17-09; 11:15 am]

BILLING CODE P

DEPARTMENT OF THE INTERIOR**Fish and Wildlife Service****50 CFR Part 17**[FWS-R1-ES-2009-0010]
[92210-1117-000-B4]

RIN 1018-AV87

Endangered and Threatened Wildlife and Plants; Designation of Critical Habitat for the Oregon Chub**AGENCY:** Fish and Wildlife Service, Interior.**ACTION:** Proposed rule; reopening of comment period, availability of draft economic analysis, amendment of required determinations, and announcement of public hearing.**SUMMARY:** We, the U.S. Fish and Wildlife Service (Service), announce the reopening of the comment period on the proposed designation of critical habitat for the Oregon chub (*Oregonichthys crameri*) under the Endangered Species Act of 1973, as amended (Act). We also announce the availability of a draft economic analysis (DEA) and an amended required determinations section of the proposal. We are

reopening the comment period for an additional 30 days to allow all interested parties an opportunity to comment simultaneously on the proposed designation of critical habitat for the Oregon chub, the associated DEA, and the amended required determinations section. If you submitted comments previously, you do not need to resubmit them because we have already incorporated them into the public record and will fully consider them in preparation of the final rule. We also announce a public hearing; the public is invited to review and comment on any of the above actions associated with the proposed critical habitat designation at the public hearing or in writing.

DATES: *Written Comments:* We will consider public comments received or postmarked on or before October 22, 2009.*Public Hearing:* We will hold a public hearing on Monday, October 5, 2009, from 6:30 p.m. to 8:00 p.m. Pacific Time.**ADDRESSES:** *Written Comments:* You may submit comments by one of the following methods:

- *Federal eRulemaking Portal:* <http://www.regulations.gov>. Follow the instructions for submitting comments to Docket No. FWS-R1-ES-2009-0010.

- *U.S. mail or hand-delivery:* Public Comments Processing, Attn: FWS-R1-

ES-2009-0010; Division of Policy and Directives Management; U.S. Fish and Wildlife Service; 4401 N. Fairfax Drive, Suite 222; Arlington, VA 22203.

Public Hearing: We will hold the public hearing at Benton Plaza, Plaza Meeting Room, 408 SW Monroe Ave., Corvallis OR 97330.*Availability of Comments:* We will post all comments and the public hearing transcript on <http://www.regulations.gov>. This generally means that we will post any personal information you provide us (see the Public Comments section below for more information).**FOR FURTHER INFORMATION CONTACT:** Paul Henson, State Supervisor, U.S. Fish and Wildlife Service, Oregon Fish and Wildlife Office, 2600 SE 98th Avenue, Suite 100, Portland, OR 97266, by telephone (503-231-6179) or by facsimile (503-231-6195). Persons who use a telecommunications device for the deaf (TDD) may call the Federal Information Relay Service (FIRS) at 800-877-8339.**SUPPLEMENTARY INFORMATION:****Public Comments**

We will accept written comments and information during this reopened comment period on the proposed designation of critical habitat for the Oregon chub that was published in the **Federal Register** on March 10, 2009 (74